

Local Development Framework for Bradford

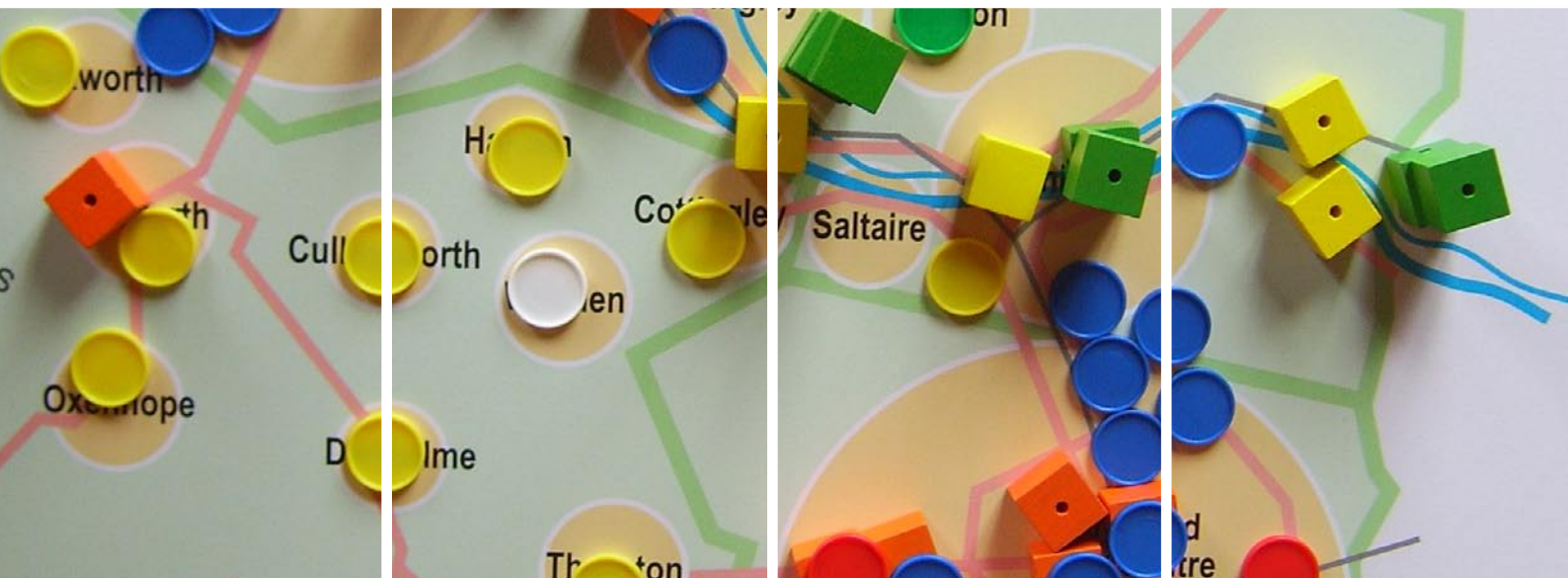
Core Strategy

Issues and Options

Consultation Event Log

Stakeholder Event : BRADFORD
Thornbury Centre

23 May 2007



CONTENTS	PAGE
1.0 EVENT OVERVIEW	1
2.0 LIST OF ORGANISATIONS & GROUPS INVITED	2
3.0 LETTER OF INVITE	11
4.0 BOOKING FORM	13
5.0 DELEGATE LIST	16
6.0 EVENT PROGRAMME	18
7.0 POWERPOINT PRESENTATION	19
8.0 PROMPT SHEET	26
9.0 FACILITATORS' NOTES	29
10.0 EVALUATION FORM	48
11.0 EVALUATION ANALYSIS	50

1.0 EVENT OVERVIEW

OBJECTIVES

- 1.1 The event had two broad objectives:
1. Raise awareness of the Core Strategy Issues and options for Bradford.
 2. Engage with key stakeholders in exploring the key issues and possible options for addressing them in the Core Strategy

The event focused on the Issues and Options Papers in particular *Topic Paper 2: The Spatial Vision and Strategy for Bradford*.

PARTICIPANTS

- 1.2 The Council targeted invites to local organisations and groups with an interest in the area. The letter of invite and a list of invitees can be found below. Participants were sent out copies of the relevant Topic Papers prior to the event, as well as the programme.
- 1.3 A total of 48 delegates plus 8 organisers and facilitators attended the event. The letter of invite, booking form and list of delegates can be found later in this report.

PROGRAMME

- 1.4 The event took the form of a half-day, which started with scene setting presentations followed by break out groups, which looked two key areas. A five minute DVD was used at the start of the presentation to set the scene.

DOCUMENTATION

- 1.5 Copies of the Issues and Options Reports were available on registration as well as the LDF Leaflet No2 on the Core Strategy. A delegate pack was produced which contained:
- Programme
 - Delegate list
 - Copies of each of the presentations

BREAK OUT GROUPS

- 1.6 The break out groups were designed to allow people to express their opinions on the future of the District, more specifically the main issues facing the area and then in the second session, where the majority of housing and employment development should be located.
- 1.7 There were three break out groups for each session. Each had a dedicated facilitator as well as a scribe to record the discussions.

EVENT EVALUATION AND FEEDBACK

- 1.8 Each delegate pack included an event evaluation form. A total of 13 delegates completed a form. These have been analysed and used to inform later events.

2.0 LIST OF ORGANISATIONS AND GROUPS INVITED

14th Keighley (Haworth) Scout Group
 20th Bradford South Scout Group
 21st Bradford Guides, Brownies, Rangers
 21st Halifax (Queensbury) Boys Brigade
 2nd Riddlesden Scout and Guide Group
 34th Bradford South Scout Group
 36th Bradford South Scout Group
 68th Bradford South Scout Group
 8 Coombe Hill
 91st Bfd Guides Rainbows and Boys Brigade
 A A Planning Services
 A Khawaja Architecture Building Services Ltd
 Abbeyfield House
 ABDRA
 ADAAB
 Addingham Bowling Club
 Addingham Civic Society
 Addingham Parish Council
 Advice and Training Centre
 African Community Support Project
 AFTOC
 AFTOC
 Agape
 Age Concern Bradford & District
 Ahmadiyya Movement Mosque
 Ahmadiyya Muslim Association
 Aire and Calder Rivers Group
 Aire Valley Conservation Society
 Aire Valley Neighbourhood Watch
 Aire Valley Rail Users Group
 Aire Valley Trade Force Ltd
 Aire Valley Venture Scout Unit
 Aire View Infant School
 Aireborough Planning Services
 Airedale and Craven Relate
 Airedale Beekeepers Association
 Airedale Cricket Club
 Airedale General Hospital
 Airedale Music Company
 Airedale NHS Trust Community Drugs
 Airedale Partnership
 Airedale Writers' Circle
 Al Huda Institute
 Albion Juniors AFC
 Aldersgate Estates Ltd
 Aldersgate Methodist Church
 Aldersgate Parent & Toddler Group
 Al-Faouq Associates
 All Saint's 60+ Group
 All Together
 Allerton Community Association
 Alley Cats Over 50's Line Dance Club
 Allison and MacRae
 Ambler Thorn Play Group
 Anchor Housing
 Anchor Housing Social Club
 Anchor Trust
 Ancient Monuments Society
 Anjuman E Haaideria
 Apna Ghar Community Association
 Apperley Bridge Development Residents
 Association
 Arthritis Care
 Asa Briggs Bowling Club
 Ashbourne Estate Community Association
 Ashdown Friendship Club
 Asian Business Forum
 Asian Disability Awareness Action in Bradford
 Asian Disability Network
 Asian Games Tournament
 Asian Trades Link
 Asian Women & Girls Centre
 Asian Women's Support Group
 Asian Youth and Cultural Organisation
 Asquith Properties
 Assisi Centre
 Assisi House Project
 Ataxia Self Help Group
 Atlas Primary
 Atlas Primary School
 Attock Park Residents Association
 Autistic Spectrum Disorder Team
 Azaad Kashmir
 Azad Cricket Club
 B P A
 Baby Sense and Toddler Gym
 BAFR
 Baildon & District Residents Association
 Baildon Action For Youth
 Baildon Civic Society
 Baildon Community Council
 Baildon Community Link
 Baildon Home Farm Trust
 Baildon Music Festival
 Baildon Peace Group
 Baildon Shared Futures
 Bangladesh Community Association
 Bangladesh Community Cultural Organisation
 Bangladeshi Youth Club
 Bank Top Harriers ARLFC
 Bankfoot Action Plan
 Bankfoot Darby and Joan Club
 Bankfoot Villa Football Club
 Banks Long & Co
 Barkerend Childrens Centre
 Barkerend Primary
 Barkerend Primary School
 Barton Willmore Planning Partnership
 Basement Gym
 BAZM-E-ILM-O-FUN
 Bazm-e-urdu Bradford
 BCA
 BCEP Community Urban Design
 BCFC Disabled Supporters Association
 BD4Family, Parents & Toddlers
 BD6 in Stitches
 Beckwith Design Associates
 Bedale 'Darby & Joan' Luncheon Club
 Beechcliffe Face
 Beldon Sports FC
 Belle Vue Girls School
 Ben Bailey Homes
 Ben Rhydding Action Group/Save Us Pub
 Bereavement Welfare Association
 Bierley Community Centre
 Bierley Walkers
 Bierley Youth Action Project
 Bi-Lingual Learning & Teaching Association

Bingley & Shipley Mencap
 Bingley Amateur Operatic Society
 Bingley Arts Centre
 Bingley Civic Trust
 Bingley CVS
 Bingley Environmental Transport
 Bingley Labour Party
 Bingley Society of St Vincent de Paul
 Bingley Voluntary Action
 Bioregional Quaint Developments
 BISAN
 BKYP - Bradford & Keighley Youth Parliament
 Black Mountain Millennium Green/Brunel
 Community Association
 Blue Room properties
 BMEP & JAS
 Bob Jarman
 Bolling Special School
 Bolton Methodist Church
 Bolton Villas CC
 Bolton Villas Cricket Club
 Bolton Woods Community Association
 Borough of Pendle Council
 Bracken Bank Community Centre
 Brackenhill Primary School
 Bradford & Airedale Teaching Primary Care
 Trust
 Bradford & District Chamber of Trade
 Bradford & District Coalition of Disabled People
 Bradford & District Local Produce Markets
 Bradford & Ilkley College
 Bradford & Northern Housing Association
 Bradford Access Action
 Bradford Action for Refugees
 Bradford Aid for Kosova
 Bradford All Stars
 Bradford Alliance on Community Care
 Bradford and District Youth Offending Team
 Bradford Area Play Association
 Bradford Association of Visually Impaired
 People & Centre for Deaf People
 Bradford Bandits BMX Racing Club
 Bradford Botany Group
 Bradford Breakthrough Ltd
 Bradford Business Link
 Bradford Cathedral
 Bradford Centre Regeneration
 Bradford Chamber of Commerce & Industry
 Bradford City Disabled Supporters Association
 Bradford City Farm Association Ltd
 Bradford City Football Club
 Bradford City Womens Football Club
 Bradford Civic Society
 Bradford Click-On
 Bradford College
 Bradford Community Arts Ltd
 Bradford Community Broadcasting
 Bradford Community Environment Project
 Bradford Community Health Trust Leeds Road
 Hospital
 Bradford Community Housing Trust
 Bradford Council-Museums & Galleries Service
 Bradford Cyrenians
 Bradford Diocesan Office
 Bradford District Chamber of Trade
 Bradford District Senior Power
 Bradford Dudley Hill Under 12's
 Bradford Dynamoes
 Bradford East Area Federation
 Bradford East District Venture Scout Unit
 Bradford Empowerment Project Information
 Shop
 Bradford Environmental Action Trust
 Bradford FSV
 Bradford Gymkhana Cricket Club
 Bradford Hate Crime Alliance
 Bradford Hospitals NHS Trust
 Bradford International Kite Festival Company
 Bradford Joint Training Board
 Bradford Ladies Hockey Club National League
 Bradford Local Communities FC
 Bradford Moor & Thornbury Forum
 Bradford Moor African Caribbean Young
 People's
 Bradford Moor Bowling Club
 Bradford Moor Community Primary
 Bradford Moor Consortium
 Bradford Moor Cricket Club
 Bradford Moor Housing Office
 Bradford Moor Neighbourhood Partnership
 Bradford Moor Youth & Community Project
 Bradford Moor Youth Sports Association
 Bradford Motor Education Project
 Bradford Night Stop
 Bradford North Retirement Group
 Bradford Older Carers' Association (Mencap)
 Bradford Older People's Alliance
 Bradford Ornithological Group
 Bradford Park Avenue Junior Football Club
 Bradford People First
 Bradford Punjabi Cultural Society
 Bradford Racial Equality Council
 Bradford Ramblers Association Group
 Bradford Real Nappy Project (BEAT)
 Bradford Repetitive Strain Injury Support
 Bradford Retail Action Group
 Bradford Scout/Guides Water Activities
 Bradford Secondary PRU
 Bradford Shalimar Cricket Club
 Bradford Sport & Recreation Association
 Bradford Tigers J F C
 Bradford Trades Union Council
 Bradford Trident
 Bradford University
 Bradford Urban Wildlife Group
 Bradford Vision
 Bradford Vision
 Bradford Vol Action Group for Disabled
 Persons
 Bradford Wildcats F C
 Bradford Women's Aid
 Bradford WRVS
 Bradford Youth Players
 Bradford Youth Service
 Bradleys Both Parish Council
 Bradnet
 Braithwaite & Guard House Community
 Association
 BRAVE Women's Support Group
 Brewster Bye Architects
 British Red Cross
 British Telecom
 BRITISH WHEELCHAIR SPORTS
 FEDERATION

British Wind Energy Association
 Bruce Barnes
 Brunel Housing
 Brunel Housing Association
 Brunel Support Works
 Brunel Tenants Forum
 BSCP
 BSRAPD
 BT (Bradford) Cricket Club
 Buildings Consultation Group
 Burger Court Nursing Home
 Burley Community Council
 Burley in Wharfedale Parish Council
 Burnett Planning & Development
 Buttershaw Action Group
 Buttershaw Bantams AFC
 Buttershaw Baptist Church
 Buttershaw Celtic FC
 Buttershaw Christian Family Centre
 Buttershaw High Rock Challenge Group
 Buttershaw High School
 Buttershaw Primary School
 Buttershaw Youth Centre
 Buttershaw Youth Football Club
 Buy a Child a Smile
 By Worth Craft Group
 BYAP
 BYCO
 BYDP
 Byron Primary School
 CABB
 Caddick Development
 Calder Architectural Services Limited
 Calderdale Metropolitan Borough Council
 CALEB
 Caleb Project
 Cambing Cricket Club
 Campaign For Real Ale
 Canterbury Youth Club
 Careers Bradford Ltd
 Carlton ARLFC
 Carlton-Bolling College
 Caroline Street Social Club
 Carrwood Centre
 Carrwood Primary School
 Carter Jonas
 Cathedral Centre Project
 Cathedral College Deputy Head
 Cavendish Primary School
 CB Richard Ellis Ltd
 CBMDC - Shipley East Regeneration
 CBMDC Youth Service
 Cellar Project
 Central Libraries
 Centre for Deaf People
 CHACH Association
 Chair - Newlands Plus Pact Board
 Chairobics Group
 Challenge College
 Charities Information Bureau
 Chatabox Holiday Club
 Checkpoint Women's Group
 Chief Planning Inspector
 Chris Thomas Ltd Outdoor Advertising
 Consultants
 Christians Against Poverty
 Churches Community Group
 City Centre Project
 City Lofts Development
 City of Bradford Esprit Diving Club
 City of Bradford YMCA
 City of Wakefield M D C
 City PCG
 City PCT - Manningham Clinic
 Clayton ARLFC
 Clayton Heights Community Group
 Clayton Heights Mother & Toddler Group
 Clayton Parish Council
 Clear Designs
 Clerk to Ilkley Parish Council
 Clockhouse Project
 CNet
 COM-B Computing Bradford
 Commission for Architecture and the Built Environment
 Community Cohesion Facilitation Service
 Community Development Worker
 Community Exercise Sessions
 Community Involvement Worker
 Community Network
 Community Safety Fire Department
 Community Safety Officer
 Community Service Volunteers
 Community Team Learning Disabilities
 Community Unity
 Community Works
 Communityworks Community Centre & Childrens Centre
 Cononley Parish Council
 Cooper Lane Primary School
 Cottingley Community Association
 Cottingley NAP
 Cottingley Theatre Club
 Council for British Archaeology
 Countryside Properties (Northern) Ltd
 Cowling Parish Council
 CPRE Bradford District
 CPRE West Yorkshire
 Craven Design Partnership
 Craven District Council
 Craven United FC
 Croft Hall Social Club
 Crofts Thornbury U13 Soccer Team
 Crosley Wood Residents Group
 Crosley Wood Tenants Action Group
 Crosley Wood Tenants Association
 Cross Roads Junior Football Club
 Cross Roads Junior Football Club
 Crossflatts Village Society
 Crossley Hall Primary School
 Cullingworth Parish Council
 Cullingworth Playsafe Committee
 Dacre, Son and Hartley
 David Beighton Architects
 David Wilson Estates
 Dawatul Islam
 DDA Task Team
 De-Ja-Vu
 Denholme Residents Action Group
 Denholme Town Council
 Denton Parish Council
 Department of Peace Studies (Bradford University)
 Depol Associates

Design Exchange
 DevPlan UK
 Dial Bradford
 Dialogue Communicating Planning
 Disability Advice Bradford
 Disability Advice Bradford
 DLA Architecture
 Dominican Association of Bradford
 Donaldsons
 DPDS Consulting Group
 Draughton Parish Council
 Drawtech
 Drighlington Parish Council
 Drovers Way Residents Group
 DTZ PIEDS Consulting
 Dudley Hill Imps
 Dudley Hill Rangers FC
 Dulay Seymour
 Dunsford Group for older People
 Early Years & Childcare Service (CBMDC)
 East Bierley Local History Group
 East Bowling Unity Pensioners Club
 East Morton Primary School
 Eastburn Playgroup/Eastburn Playing Fields
 Associa
 EBRO
 Eccleshill Baltic House
 Eccleshill Community Play Group
 Eccleshill Daycare Centre
 Eccleshill Football Club
 Eccleshill Karate Club
 Eccleshill Mechanics Institute
 Eccleshill Sports & Social Club
 Eccleshill Veterans Association & Bowling Club
 Eccleshill WMC
 Eccleshills Utd
 Eddisons Commercial
 Edwards Rainbow Centre
 Eldwick Village Society
 ELIM Church Centre
 English Heritage
 Environment Agency
 Environmental Taskforce
 Eric Barraclough
 Eric Breare Design Associates
 Esholt War Memorial Institute Bowling Section
 Estonian Club
 F and W Drawing Services
 Fabric - Forum for the Arts in Bradford
 Fagley Community Social Club
 Fagley Football Club
 Fagley Lane Action Committee
 Fagley Over 60's
 Fagley Sports and Social Club
 Fagley Tenants & Residents Association
 Fagley Youth and Community Centre
 Fairweather Green Working Mens Club
 Farcliffe Family Centre
 Farnhill Parish Council
 Farrell and Clark
 Faxfleet Residents Association
 Fearville Primary School
 Feversham Primary School
 Fibromyalgia Support
 First Bradford
 First Martyrs Social Centre
 Fitness First
 Forum Focussed on Pensioner Power
 Four Square Drawing Services
 Foxhill Guides
 Foxhill Primary School
 Foyer Development Manager
 Francis House Residents Association
 Freshstart
 Friends of Alma Nursery
 Friends of Bowling Park
 Friends of Bradford Youth Players
 Friends of Buck Wood
 Friends of Harold Park
 Friends of Lister Park (FLIP)
 Friends of Menston Primary School
 Friends of Newhall Park Primary School
 Friends of Peel Park
 Friends of Roberts Park
 Friends of Swain House
 Friends of Undercliffe Cemetary
 Friends of Woodside Primary School
 Friends of Wycliffe CE Primary
 Friends Together
 Frontline Initiative
 Fun Care Out of School Holiday Club-Step 2
 Young People's Health Project
 Future Energy Yorkshire
 Future For Women
 G R Morris Town Planning Consultant
 Game On (Leisure Club/Pool Centre)
 Garbe Real Estate Ltd
 Gateway Trinity Football Clu
 George Wimpey Northern Yorkshire Ltd
 Get up&go club
 Gildersome Parish Council
 Gingerbread Housing Project
 Gingerkidz
 Girdlington Action Partnership
 Girdlington Community Centre
 Girdlington Primary
 Glenroyd Residents Association
 Glusburn Parish Council
 Goitside Regeneration Partnership
 Goldfinch Estates Ltd
 Good Companions Dancing Club
 Government Office for Yorkshire & The
 Humber
 GP Planning and Building Services
 Grange Girls Project
 Great Horton Youth Club
 Green Lane Primary School
 Greenfield
 Greenfield School
 Greengates Albion Football Club
 Greengates Allotment Society
 Greengates Juniors Football Club
 Greengates Liberal Club
 Greengates Primary School
 Greengates Veterans Association
 Greengates Veterans Bowls Association
 Greenhill Action Group
 Greenhill Friday Club
 Greenhill Resource Centre
 Greenway Amenity Group
 Greenwood Youth & Community Centre
 Gregory Properties
 Grosvenor Association
 Grove House Primary School

Guru Gobind Sikh Temple	Humdard
Gurunanak Sikh Temple	Hungarian Heritage
GVA Grimley	Hungarian Heritage
Hackney Carriage Proprietors	Idle & Thackley AODS
HALE	Idle Baptist Church and Community Centre
Halliday Clark	Idle C of E Primary School
Ham Group	Idle Corps
Hanfia Mosque	Idle Cricket Club
Hanover Close - Estate Office	Idle Hands Cross Stitch & Craft Club
Hanson School	Idle Independent Church
Harbourne Residential Care Centre	Idle Juniors
Harbourne Residents Group	Idle Parish Church
Harden Village Society	Idle Salvation Army
Harden Youth Club	Idle Tenants and Residents Association
Harrogate District Council	Idle Tide Committee
Haworth & Oxenhope District Bridleways Group	Idle Upper Chapel
Haworth Road Health Centre	Idle Village Tenants & Residents
Haworth Road Playgroup	Idle WMC
Haworth, Cross Roads & Stanbury Parish Council	Idle Working Mens Club & Institute
Haycliffe School	Idle YMCA
Haycliffe Special School	Idlethorpe Indoor Bowlers Club
Hayes Dobson Developers Ltd	ies
Hazel Beck Action Group	Ilkley Civic Society
Head of Town Planning Legislation Unit	Ilkley CVS
Healthy Heaton Group	Ilkley Design Statement
Heartsmart	Immaculate Conception Church
Heaton Old Peoples Entertainment and Social Centre	Indian Workers Association
Heaton Park Cricket Club	Indigo Planning Ltd
Heaton Utd	Inland Waterways Association
Heaton Woods Trust	Interfaith Centre
Help the Aged	Iqra Community Primary School
Hendford Drive & Otley Road T & R Assoc.	ISIS Project
Hepworth and Idle Cricket Club	Islamic Cultural and Educational Assoc.
High Fernley Primary School	Islamic Cultural Centre
High Park Rest Home	Islamic Relief Agency
Highgate News	Italian Senior Citizens Association
Highways Agency, Yorkshire & Humber	IT's Fun To Dance
Hindu Cultural Society	J C Redmile
HJ Banks and Co Ltd	J O Steel Consulting
Hollingwood Primary	J R Wharton Architect
Holme Christian Care Centre	Jamiat Ahl-E-Hadith
Holme United Reformed Church	Jamiyat Tabliga-ul-Islam
Holmewood Activity Centre	Jeff McQuillan Consulting
Holmewood Community Council	Jenny Lane Action Group
Holmewood Elderly Persons Forum	Jer Lane Cricket Club
Holmewood PACT	Jireh House Community Centre
Holmewood Raiders	Joseph Rowntree Charitable Trust
Holmewood United Football Club	Jubilee Outreach Yorkshire
Holy Trinity Church	Just Nails
Holybrook Centre	JW School of Dance
Holybrook Primary School	KADAL
Holyfamily RC Secondary School	Karmand Community Centre
Home Builders Federation	Katana Ju Jit Su Club
Home Safety Project Co-ordinator	Keighley Bangladeshi Youth Organisation
Home Start Shipley Co-ordinator	Keighley College
Homestart	Keighley Local Enterprise Agency
Homestart Bradford North	Keighley NE
Horton Bank Top Playgroup	Keighley PACT
Horton Grange	Keighley Town Council
Horton Grange Regeneration PACT	Keighley Voluntary Services
Horton Park Centre	Kelly Architectural Design
Housing Corporation, NE Region	Kensington Health Centre
How Planning	Ken's Leisure Centre
Hum Nuwa	Keyhouse Project
Human Neighbourhood Project	Khalifa Society
	Kidz Klub
	Kidzone Unit Manager

Killingham Primary School
 Kings Park Environment Focus Group
 Kirkgate Carers' Group
 Kirkgate Community Centre
 Kirkgate Studios & Workshops
 Kirklees Metropolitan Council
 Knowleswood Primary School
 LA Sante
 Laisterdyke Business & Enterprise
 Laisterdyke Centre
 Laisterdyke Cricket Club
 Laisterdyke Local History Group
 Laisterdyke Trinity Church
 Lancashire County Council
 Land & Development Practice
 Landmark Securities
 Landtask
 Laneshaw Bridge Parish Council
 Langtree
 Lapage Primary & Nursery School
 Lawcroft House Police Station
 Learning and Skills Council
 Leeds City Council
 Leeds Friends of the Earth
 Leeds/Bradford International Airport
 Legrams Lane U5's & Women's Centre
 Leith Planning Ltd
 Lesleys Hairstylist
 Let Wyke Breathe
 Liasterdyke Community Centre
 Lidget Green Community Partnership
 Lidget Green Primary
 Light of the World Community Centre
 Lilycroft Primary School
 Little Horton NAP
 Littman Robeson
 Low Moor & Wyke British Legion (Women's Section)
 Low Moor Local History Group
 Lower Fields Primary School
 Lowerfields School
 Lowerhouse Close Residents
 M Stephenson
 Making Space
 Manningham & Girdlington Heat Project
 Manningham & Girdlington Plus Project
 Manningham & Girdlington SRB
 Manningham Bloom
 Manningham Brotherhood Cricket Club
 Manningham FC
 Manningham Hockey Club
 Manningham Housing Association
 Manningham Library
 Manningham Mills Cricket Club
 Manningham Mills Sports Association
 Manningham NAP
 Manningham Parish Church
 Manningham Project
 Manningham Residents Association
 Manningham Sports Centre
 Manningham Youth Project
 Manor Property Group
 Maple Properties
 Marilyn Brichard
 Mark Brearley & Co Chartered Surveyors
 Masts
 Mauritian Society
 Mayfield and Clayhill Tenants Group
 McCann's DIY Centre
 McGinnis Development
 Meadowcroft Care Centre
 Menston Arts Club
 Menston Cares
 Menston Community Association
 Menston Parish Council
 Menston Singers
 Mental Health Service Users Group
 Mercury Communications
 Micklethwaite Village Society
 Midas Touch Asian Musical Group
 Middleton Parish Council
 Millan Centre
 Millan Centre
 Millennium Volunteers
 Milton House
 Minister of Clayton Heights Methodist Church
 Miriam Lord First School
 Miriam Lord Primary Shool
 Missol-e-sussi
 Mobile Operators Association
 Mobility Planning Group
 Monday Night Social Group Trust
 Morton Village Society
 Mothers Union
 Mr Simon Loveitt
 Ms Angela Maxwell
 Ms Husenara Sher & Javairia Sabir
 Multi Arts International
 Multiple Sclerosis Friends
 Mums's and Tots at Suttys
 Munch Bunch Toddlers Group
 Munchbunch Toddlers
 Muslim Cultural Association
 National Children's Home
 National Farmers Union
 National Federation of Women's Institutes
 National Media Museum
 Natural England
 Neighbourhood Element
 Neighbourhood Watch Co-ordinator
 Nesfield with Langbar Parish Council
 Netherlands Avenue School &Community Nursery
 Network East Action Trust
 Network Rail
 New Horizons
 New Horizons
 New Mason Properties
 New Virginia Tavern
 Newby House Tenants and Resident Group
 NEWCA
 Newhall Park Primary School
 Newholme
 Newlands (Pregnant Schoolgirl Unit)
 Newlands Local Enterprise LTD
 Newton Street Day Centre
 North Bradford Primary Care Trust
 North Bradford Retired Men's Forum
 North Bradford Retired Persons Action Group
 North Country Homes Group Ltd
 North Wing Community Centre
 North Wing Mission Community Centre
 Northcote C C
 Northern Orchestral Enterprises

Norwood Green Cricket Club
 Npower Renewables
 Nuttall Yarwood and Partners
 Oakenshaw Residents Association
 Oakenshaw Veterans Association
 Oakworth Village Society
 Oasis Complementary Therapy
 Oddfellows Arms Inn
 Odsal / Sedbergh Junior Rugby Club
 Odsal Residents Liasion Group
 Older People's Focus Group
 Olive Branch Trust
 Oltergraft Planning Services
 Omega Design
 On Track
 Operational Manager - Manningham One Stop Centre
 Ormond House Tenants Association
 Otley Road Tenants and Residents Forum
 Otley Town Council
 Our Lady & St Brendan's Catholic Primary
 Oxenhope Parish Council
 Oxenhope Social Club
 Oxford Road R.A.
 P.M Coote
 PACT
 Pact Co-ordination Project
 PACT Team Leader
 Pakistani Women's Forum
 Parent and Toddler Group
 Parkgate Design
 Parkland Primary School
 Parkside Playgroup
 Parkside Residents Association
 Pastor Joe Link
 Paul & Co
 PCT
 Peacock and Smith
 Peel Park Primary School
 Penny Trepka
 Physically Disabled Forum
 Piccadilly Estate management Ltd
 Pizza Box
 Planet Design Group
 Planning Potential
 Planning Prospects Ltd
 PLAYCENTRE
 Plot of Gold Ltd
 Plumpton Park
 Pollard Park Residents Association
 Pondsides Neighbours Group
 Poplars Farm Primary School
 PPG Land Ltd
 Presence FM
 Priestley Centre for the Arts
 Prince's Foundation
 Priority Sites Ltd
 Project 5
 Punjabi Maehfil
 Purlin Project
 QED
 Quadrant Pact Board
 Quadrant Participation Project
 Queens Road B Allotment Association
 Queensbridge United AFC
 Queensbury 18th Bfd Scout Group
 Queensbury Bell Ringers
 Queensbury Club for the Handicapped
 Queensbury Community Association
 Queensbury Community Programme
 Queensbury Cricket Club
 Queensbury Juniors
 Queensbury Juniors ARLC
 Queensbury Juniors ARLFC
 Queensbury School
 Queensbury Support Centre
 Queensbury Tykes Playgroup
 Queensbury Youth & Community Centre
 Quencher
 RAABTHA
 Rafike
 Railtrack Property
 Ramblers Association
 Ravenscliffe & Greengates Community Forum
 Ravenscliffe AFC
 Ravenscliffe Community Association
 Ravenscliffe Enterprise Girls Group
 Ravenscliffe NHO
 Ravenscliffe Y & C Centre
 Ravenscliffe Youth & Community Centre
 Rawson Square Residents Association
 RCDP
 RCDP
 Red Beck Vale Neighbourhood Watch
 Reevy Hill Primary School
 Regen 2000
 Relay Recruitment Rovers
 Respite Care Unit
 Rev Paul Hackwood
 Rev Sarah Groves
 Rev. John Nowell
 Reverend Kevin Tromans
 Revolution Show Corps
 Richards & Co
 RippleDay Treatment & Rehabilitation Centre
 Robinson Architects
 Robinson Consulting Engineers
 Roshni Womens Group
 Rotary Club of Bingley
 Rotary Club of Bingley and Airedale
 Rotary Club of Shipley
 Rowan Avenue Neighbourhood Watch
 Royal Town Planning Institute
 Royds Community Association
 Royds Healthy Living Centre
 Royds Junior Rugby Club
 Royds Rugby Club
 Royds Rugby League Club
 RSPB (Northern England region)
 Runnymede Court
 Runnymede Court Social Club
 Russell Hall Primary School
 Ryecroft Community Centre
 Ryecroft Primary School
 S & R Carpets
 SAFE Project
 Safer City - Bradford & District
 Saltaire Cricket Club
 Saltaire Village Society
 Salvation Army
 Salvation Army Mans Hostel
 Sandale Walk Community Centre
 Sanderson & Weatherall
 Sandy Lane Parish Council

Sangat Centre
 Scholemoor
 Scouts Association
 SEAFED
 Sedbergh Youth and Community Centre
 Sharing Voices Initiative
 Sherr Guru Ravidas Bhawan
 Shibden Head Primary School
 Shipley & Baildon Blind Welfare Assoc
 Shipley and Baildon Community
 Shipley and Baildon Volunteer Bureau
 Shipley and District Horticultural Soc
 Shipley CAB Gilstead Village Society
 Shipley College Library
 Shipley Red Cross
 Shipley Salvation Army
 Shipley Sure Start
 Shipley Volunteer Bureau
 Shipley Women's Aid
 Shipley/Baildon Save the Children Fund
 Shirley Manor Primary School
 Shop Mobility
 Shree Krishna Community Centre
 Signpost Project
 Silsden Town Action Group
 Silsden Town Council
 Simon Estates Ltd
 Slackside Parent and Toddler Group
 SNOB
 SNOOP
 Social Services Services to Children
 Society for the Protection of Ancient Buildings
 Soldiers and Sailors Association
 South and West Bradford Support Group
 South Asian Females Empowered (SAFE)
 South Bradford Ladies Football Club
 South Pennines association
 South Pennines Packhorse Trail Trust
 Southmere Primary School
 Spawforth Planning Associates
 SPEED Project
 Sport England
 Springdale Friendship Group
 Springfield Bike Project
 Springfield Junior Youth Drama Group
 Springfield Surgery
 Springwood Community Primary
 Springwood Primary
 St Aidan's Presbytery
 St Andrews Church
 St Andrews Methodist Church
 St Anthonys RC Church
 St Augustine's Art Project
 St Augustines Church
 St Brendans Church
 St Clare's Church
 St Clares Community Centre
 St Clares Improvement Group
 St Clares Pastoral Parish Council
 St Clares Sheltered Housing Complex
 St Clements Church
 St Clements Vicarage
 St Columba's Catholic Primary School
 St Cuthbert's Church
 St Francis Catholic Primary School
 St Francist Catholic Primary
 St Hugh's Centre
 St James Securities Ltd
 St James Wednesday Club
 St John The Baptist C of E Church
 St John the Divine
 St John The Evangelist Catholic Primary
 St Johns
 St John's C of E Primary School
 St Johns Church
 St John's Church Youth Club
 St Johns Day Centre
 St John's Luncheon Club
 St Johns U R C
 St Johns United Reformed Church
 St Luke's CE Primary School
 St Lukes Vicarage
 St Mary's Church
 St Mary's Residents Association
 St Matthew's C E Primary School
 St Matthews CE Primary
 St Matthew's Under Fives
 St Oswald's CE Primary
 St Patrick's Church
 St Pauls Vicarage
 St Peter's Catholic Primary School
 St Peters Presbytery
 St Philip's CE Primary School
 St Vincent de Paul Society
 St Wilfrid's Church
 St William's Catholic Primary School
 St Winifred's Parent & Toddler Group
 St Winifrid's Hall Users Group
 St. John's Luncheon Club
 St. John's Under Fives
 St. Mary's Pre School Group
 St. Matthews Parents Group
 Star Keys Estate Agents, Valuers and Surveyors
 Starz Performing Arts Academy
 Steeton with Eastburn Parish Council
 Stockbridge Neighbourhood Development Group
 Stocks Lane Primary School
 Stocks Lane Rangers Football Club
 Stonebridge Court
 Suffa Tul-Islam Assoc.
 Summer Activities Committee
 Sunbridge Road Mission
 Support Team for Deaf Children
 Support Works
 Sure Start Manningham
 Sure Start Project
 Surestart
 Surestart BHT
 Surestart Manningham
 Surestart Manningham
 SURF
 Surti Muslim Khalifa Society
 Sutton Community Association
 Sutton Community Centre
 Sutton-in-Craven Parish Council
 Swain House Primary School
 SWG Planning Services
 Sycamore Court Tenants & Residents Association
 Taking Time - Memory Workshop
 Taleemul-Quran Society
 Telewest Communications

TFD Football Club
 TFD Youth and Community Centre
 Thackley AFC
 Thackley Cricket Club
 Thackley Football Club
 Thackley Methodist Church
 Thackley Primary School
 Thalassaemia & Sicklecell Support
 GroupProspect Juniors AFC
 The Albion Inn
 The Albion Sports Bar
 The Anchor Project
 The Award Centre
 The Balloon & Basket
 The Blue Pig
 The Bradford Mentor Group
 The Brewery Tap
 The British Horse SocietyYorkshire Riding
 Centre
 The City Centre Project
 The Commercial Inn
 The Coniston
 The Cricketers
 The Dog & Gun
 The Dominica Association
 The Emerson Group
 The Fountain
 The Garden History Society
 The Gateway
 The Gateway Centre
 The George
 The Georgian Group
 The Girlington Centre
 The Goldsborough
 The Grange Technology College
 The Great Northern
 The Green Man
 The Greenway Project C/O Duke of Edinburgh
 Awards Centre
 The Hare & Hounds
 The Hitching Post
 The Hog's Head
 The Horse & Farrier
 The Jigsaw Community Project
 The Junction
 The Kirkgate Centre
 The Lane Ends
 The Leisure Centre
 The Light of the World Community Centre
 The Lighthouse Outreach
 The Link Project Bradford & Airedale Mental
 Health Advocacy Group
 The Luncheon Club
 The Mail Corporation
 The Malt Kiln
 The Manor House
 The Moorfield Centre
 The New Inn
 The Old Bell Chapel
 The Peacemakers
 The Priestley
 The Priestley Centre for the Arts
 The Prince of Wales
 The Prospect
 The Prospect Hotel
 The Robin Hood
 The Rockwell Centre
 The Roebuck
 The Royal Hotel
 The Royal Oak
 The Salvation Army
 The Salvation Army in Wibsey
 The Salvation Army Over 60's Club
 The Seven Stars
 The Shoulder of Mutton
 The Sikh Temple
 The Smiling Mule
 The Springfield
 The Swing Gate
 The Theatres Trust
 The Thornbury Centre
 The Thursday Club
 The Tickhill Centre
 The Twentieth Century Society
 The Undercliffe Cemetary Charity
 The Victorian Society
 The Vine Trust
 The Wednesday Club
 The Wellesley Knitting ClubLow Moor Primary
 School PTFAParks Amateur Boxing Club
 The White Bear
 The White Hart
 Thornbury Cricket Club
 Thornbury Gardens and Allotments Association
 Thornbury Methodist Church
 Thornbury Youth & Community Association
 Thornbury Youth Centre
 Thornton Community Centre
 Thorpe Edge Community Forum & RCDP
 Thorpe Edge Community Project
 Thorpe Edge Jaguars St Hockey Team
 Thorpe Edge Women's Self Help Group
 Thorpe Methodist Church
 Tong School
 Tong Sports and Social Club
 Top Line Cricket Club
 Tots Unlimited- BD4 Family Centre
 Touchstone Project
 Town Hall Women's Guild
 Tradeforce Buildings
 Transco (North of England)
 Transport 2000
 Trawden Forest Parish Council
 Trident
 Trinity Methodist Church
 Turnaround Project
 Turner Associates
 Tyersal Action Group
 Tyersal FC
 Tyersal Park Junior Football Club
 Ukranian Church
 Undercliffe ARLFC
 Undercliffe Celtic
 Undercliffe Celtic Junior Football Club
 Undercliffe Cricket Club
 United Co-operatives Ltd
 Unity Cricket Club
 UnLtd - The Foundation for Social
 Entrepreneurs
 Upper Bolton Conservative Club
 Upper Thorpe Edge Tenants and Residents
 Assoc
 Urban Design
 Urban Splash

User Friendly
 Usman Welfare Fund
 V I Sahara Group
 Ventnor Youth Academy
 Veteran's Association
 Vicar Lane Housing Scheme/New Leaf
 Victim Support
 Victim Support Bradford District
 Victor Road Youth Club
 Victoria Conservative & Constitutional Club
 Victoria Hotel
 Victoria Rangers AFC
 Victoria Rangers ARLFC
 Vincent and Gorbing Ltd
 Vision Academy
 Visual Disability Services
 VJ Associates
 Voluntary Services Centre
 Wadsworth Parish Council
 Waggon & Horse
 Walton & Co
 Wannabe Performing Arts
 Wapping Association
 Waterton Park Asian Golf Society
 Webb Seeger Moorhouse Partnership
 Wedgewood & Community Nursery
 Wedgewood Special School
 Wesleyan Reform Church Luncheon Club
 West Central Area District Federation
 West Riding Suppl
 West Yorkshire Archaeology Advisory
 West Yorkshire Division Group
 West Yorkshire Ecology
 West Yorkshire Fire Service
 West Yorkshire Fire Service
 West Yorkshire LSC
 West Yorkshire Passenger Transport
 West Yorkshire Police Crime Prevention
 West Yorkshire Service
 Westbourne Mothers & Toddlers
 Westbourne Primary School
 Westfield Shoppingtown Ltd
 Weston Parish Council
 Westwood Sports Club
 Wharfe Valley Rail Users
 Whetley Primary School
 White Hart
 Wibsey ARLFC
 Wibsey Jets Football Team
 Wibsey Local History Group
 Wibsey Primary School
 Wibsey Rugby Club
 Wibsey WMC AFC
 Wilsden Good Neighbours Scheme
 Wilsden Parish Council
 Wilsden Village Hall
 Wilsden Village Society
 Windhill Food Coop
 Windhill Futures Project
 Women Zone
 Won Off Wonders
 Woodgate Baptist Church
 Woodhall Planning and Conservation
 Woodhouse & Springbank NF
 Woodhouse Grove Methodist Church
 Woodhouse Grove School
 Woodlands C E Primary School
 Woodlands Cricket Club
 Woodleigh Rest Home
 Woodside Primary School
 Woodside Village Centre
 Working Architects Co-Op Ltd
 Wrose Community Association
 Wrose Community Centre
 Wrose Community Centre
 Wrose Parish Council
 WRVS
 Wycliffe Tenants and Residents Assoc
 Wyke Amateur RLC
 Wyke ARLFC
 Wyke ARLFC
 Wyke Christian Fellowship
 Wyke Christian Fellowship Friendly Club Low
 Moor and Wyke
 Wyke Local History Group
 Wyke Manor and Community College
 Wyke Manor Community Centre
 Wyke Manor Community College
 Wyke Urban Village
 Wyke Youth Link
 YMCA
 York House Tenants
 Yorkshire and Humber Assembly
 Yorkshire and Northern Cultural Society
 Yorkshire British Waterways
 Yorkshire County Cricket Club
 Yorkshire Cricket Board
 Yorkshire Electricity
 Yorkshire Forward Regional Development
 Agency
 Yorkshire Martyrs Catholic College
 Yorkshire Planning Aid
 Yorkshire Union of Golf Clubs
 Yorkshire Water Services Ltd
 Yorkshire Wildlife Trust
 Young at Heart
 Young Muslim Organisation
 Young People's Health Infoline
 Young Womens Project
 Youth Base
 Youth Development Project

3.0 LETTER OF INVITE

City of Bradford Metropolitan District Council

www.bradford.gov.uk

Department of Regeneration

Plans and Performance Service

8th Floor Jacob's Well
Manchester Road
BRADFORD
West Yorkshire BD1 5RW

Tel: (01274) 434050
Fax: (01274) 433767
Minicom: (01274) 392613
E-Mail: ldf.consultation@bradford.gov.uk
My Ref: TDP/P&P/LDF/CS/I&O
Your Ref:

13th April 2007

Dear Sir or Madam,

Bradford District Local Development Framework – Core Strategy Issues and Options Consultation Event

Bradford Council is currently preparing a Core Strategy this is an important document that will, once adopted, form part of the District's emerging development plan under the new Local Development Framework (LDF). The LDF will eventually replace the current development plan for the area, the Replacement UDP.

The Core Strategy will address the scale and distribution of development across the District over the next 15 – 20 years. In this respect it will set the strategy for the identification of broad locations for new housing, employment, and transport investment, as well as identify broad areas where development should be restrained. (The Core Strategy will not identify specific sites for development, but it will influence how development will be distributed across the District.) The Council is currently consulting on the Issues and Options and has published a series of eight topic papers in order to encourage discussion.

As part of the consultation the Council is holding a number of half-day Area Conferences, to discuss with local groups and other interested parties in more detail, issues relating to their area. You or your organisation have been invited to attend one of the following events:

- **Saturday 19th May 2007 at Victoria Hall, Saltaire from 9.00am – 2.00pm**
- **Wednesday 23rd May 2007 at Thornbury Centre, Bradford from 9.30am – 2.00pm**
- **Saturday 16th June 2007 at Riddings Hall, Ilkley from 9.00am – 2.00pm**

- **Saturday 23rd June 2007 at Carlisle Business Centre, Bradford from 9.00am –2.00pm**

Lunch and refreshments will be provided.

Each event will include a number of short presentations to set the background to the new LDF Core Strategy. There will then be a number of workshops where a range of issues can be debated including:

- The scale and location of new development for housing, employment and leisure across the District, and the identification of broad areas where development should be restrained;
- The role of different settlements within the District;

Above all, however, this is an opportunity for those who are involved or have an interest in development planning matters to let us know what issues and policies you think the Core Strategy should be including and addressing.

If you wish to attend this event please fill in and return the enclosed booking form by **Friday the 4th May 2007**. Places are limited by the capacity of the venue so please book as soon as possible to avoid disappointment.

Further information on the Local Development Framework is available on the Council's website at www.bradford.gov.uk/planning by following the Local Development Framework link. Copies of the eight Core Strategy Issues and Options Topic Papers are available online and as reference copies in the Council's Planning Offices at Bradford, Ilkley, Keighley and Shipley. Hard copies of the topic papers will also be made available on request by contacting the LDF Group.

Even if you cannot attend the above event please feel free to send us your comments. The Council welcomes your views and will take these into account when developing the Preferred Options for the Core Strategy. Comments should be made in writing and sent to the following FREEPOST address:

Bradford Local Development Framework
FREEPOST NEA 11445
PO Box 1068
BRADFORD
BD1 1BR

Alternatively, comments can be marked 'Core Strategy Issues and Options Consultation' and emailed to ldf.consultation@bradford.gov.uk. Comments should be received at the very latest by 6th July two weeks after the last Area Conference.

Please note that representations cannot be treated as confidential and a schedule of all representations received will be published

Should you require clarification on any of the above or further information please contact Andrew Marshall on the number above or my colleague Isha Ahmed on (01274) 434544.

Yours faithfully,



Andrew Marshall
Group Planning Manager

4.0 BOOKING FORM

City of Bradford Metropolitan District Council

www.bradford.gov.uk

CORE STRATEGY STAKEHOLDER CONSULTATION EVENTS

Bradford Council is currently producing a new strategic planning document, called a Core Strategy that will form part of its Local Development Framework. This crucial document will influence the scale and location of development to be provided for housing, employment, leisure and retail across the district for the next 10 – 20 years.

If you have an interest or role in shaping the future planning of the district, you are invited to attend one of the following events to discuss the issues and give us your views:

Saturday 19th May 2007
9.00am – 2.00pm
Victoria Hall, Saltaire

OR

Wednesday 23rd May 2007
9.30am – 2.00pm
Thornbury Centre, Leeds Old Road, Bradford

OR

Saturday 16th June 2007
9.00am – 2.00pm
Riddings Hall adjacent to Christchurch, Riddings Road, Ilkley

OR

Saturday 23rd June 2007
9.00am – 2.00pm
Carlisle Business Centre, Carlisle Road, Bradford

1. Your Details

Name:	
Address:	
Organisation:	
Telephone:	
Email:	

2. Attendance *(please tick which conference you wish to attend)*

I will be attending the event at Victoria Hall on the 19th May

I will be attending the event at Thornbury Centre on the 23rd May

I will be attending the event at Riddings Hall, Ilkley on the 16th June

I will be attending the event at Carlisle Business Centre on the 23rd June

3. Dietary needs (Lunch will be provided. Please tell us if you have any special dietary needs)

4. Any special requirements. Please list below anything else you may need. We will try our best to meet your needs so that you can fully participate on the day.

5. How to book.

To book a place please fill in this form and return to:

Isha Ahmed
Local Development Framework Group
8th Floor Jacob's Well
Manchester Road
Bradford
BD1 5RW

Or Email: ldf.consultation@bradford.gov.uk. Please head your email 'Core Strategy Area Conference'

Alternatively, please ring on (01274) 432253

Please let us know if you can attend by Friday 4th May as places are limited.

Further details of the conference and a map will be sent to you if you with your booking confirmation. Please note each conference will focus on the issues as they relate to a particular broad area namely; Bradford City, Airedale (and villages) and Wharfedale

5.0 DELEGATE LIST

Andrew Marshall	Group Planning Manager, Bradford MDC
Isha Ahmed	Team Leader, Bradford MDC
Gerry McGuckin	Senior Planning Officer, Bradford MDC
Leah Midgley	Planning Officer, Bradford MDC
Tom Walton	Planning Officer, Bradford MDC
Michelle Greenwood	Planning Officer, Bradford MDC
William Cartwright	Planning Assistant, Bradford MDC
Ali Abed	Planning Assistant, Bradford MDC

Linda Adams	Canterbury Residents Group
	Canterbury Residents Group
Shafiq Ahmed	PACT Co-ordinator (M&G Plus and Holmewood)
Mohammed Akhtar	Khidmat Centre
Judith Atkinson	Bradford Trident
Geoffrey Barker	CPRE
Zuleka Begum	Rafake
Graham Binns	Little Horton Action Group
Sue Brearley	BCHT
Peter Burgess	Grange Technology College
Martin Calvert	Regen 2000
John Davis	West Yorkshire Passenger Transport Executive
Sally Dean	Bradford Woman's Aid
Nazmin Din	Grange Technology College
Majorie Gardner	Bull Royd Allotments Association
Jeff Gordon	Homekey Project
Georgina Graydon	Thornbury Gardens and Allotment Association
Ruth Hardingham	Yorkshire and Humber Assembly
Anthony Holdich	Newland Community Association
Rosemary Hollins	CPRE
Asif Hussain	Bradnet
Khalil Hussain	Springwood Primary School
David Ison	Bradford Cathedral
Bev Johnson	Bradford Nightstop
Pam James	Older People's Group
Mark Johnson	Dacre, Son and Hartley
Aurangzeb Khan	Bradford Trident
Salma Khan	Rafake
Mandy Lewis	Mencap
Steven Lightfoot	West Yorkshire Passenger Transport Executive
Julie Lintern	Bradford and District Older People's Alliance
Katie Morley	Jones Homes (Northern) Ltd
Dorine Nakuti	Bradford Action for Refugees
Vicki Nixon	Shirley Manor Primary School
Angela O'Keefe	Owlet Children and Family Centre
Charles Patchett	Patchett Homes Ltd
Sheila Philpott	Bradford Cathedral Centre
John Pilgrim	Yorkshire Forward
Jackie Pullen	BCHT (North)
Rev Geoff Reid	Touchstone

J.B Schofield	Royds Community Association
Christina Stripecki	BCHT
Nigel Taylor	Owlet Children and Family Centre
Jane Trenholme	Thornbury Centre Manager
Janet Tyne	Mac Group
Betty Waterhouse	Sutton Community Association
Sue Whitworth	Thornbury Gardens and Allotment Association
Audrey Young	St Mary's New Horizons Care in the Community

6.0 EVENT PROGRAMME

City of Bradford Metropolitan District Council

www.bradford.gov.uk

LOCAL DEVELOPMENT FRAMEWORK CORE STRATEGY ISSUES AND OPTIONS CONSULTATION EVENT

PROGRAMME

23 MAY 2007

THORBURY CENTRE, BRADFORD

9.00	Registration and Refreshments.
9.30	Welcome and Introduction: Andrew Marshall (Group Planning Manager) setting out the aims of the event and proceedings
9.35	What is a Core Strategy: Andrew Marshall (Group Planning Manager) Short presentation introducing the Local Development Framework and Core Strategy. Including short DVD presentation
9.50	Questions and Introduction to Workshops
10.00	Workshop Session 1: Developing a vision for the Bradford District. Your chance to discuss what you think are the important planning issues facing the district. Have we identified the right issues? Have we missed any?
10.45	Refreshments break.
11.00	Workshop Session 2: Your chance to discuss the key housing and employment issues facing the District and potential approaches to them. This workshop will be based around the location of development and the roles of different settlements in meeting housing and employment land needs. It will also provide the opportunity to discuss the implications of any potential approach.
12.30	Feedback from workshop session 2
12.45	Summary and where next: Andrew Marshall will summarise key issues raised on the day and set out the next steps in developing the LDF Core Strategy.
13.00	Lunch



7.0 POWERPOINT PRESENTATION

City of Bradford Metropolitan District Council

www.bradford.gov.uk

BRADFORD LOCAL DEVELOPMENT FRAMEWORK

CORE STRATEGY – ISSUES & OPTIONS

Airedale Stakeholder Event

19 May 2007

Victoria Hall, Saltaire

Department of Regeneration

City of Bradford Metropolitan District Council

www.bradford.gov.uk

Welcome and Event Outline

City of Bradford Metropolitan District Council

www.bradford.gov.uk

Event Outline

- 9.30 Welcome and Introduction: Andrew Marshall (Group Planning Manager)
- 9.35 What is Core Strategy? Andrew Marshall (Group Planning Manager)
- 9.50 Questions and Introduction to workshops
- 10.00 Workshop Session 1. Developing the Vision
- 10.45 Refreshments break
- 11.00 Workshops Session 2 Meeting Development Needs
- 12.30 Feedback from workshop session 2
- 12.45 Summary and where next
- 13.00 Lunch

City of Bradford Metropolitan District Council

www.bradford.gov.uk

Event Aims and Objectives

- Raise awareness of the Local Development Framework in particular the core strategy and why it is important.
- Engage with local groups and organisations to explore the key issues facing the district over the next 10-20 years and the possible options for tackling them.

City of Bradford Metropolitan District Council

www.bradford.gov.uk

Event Aims and Objectives

Participation and engagement which ensures as far as practical the Core Strategy:

- Reflects the needs of the district and its communities
- Is technically robust and based on sound information
- Enjoys a broad consensus

City of Bradford Metropolitan District Council

www.bradford.gov.uk

What is the Core Strategy?

City of Bradford Metropolitan District Council

www.bradford.gov.uk

Why is it Important? (DVD)

City of Bradford Metropolitan District Council

www.bradford.gov.uk

Presentation Themes

- Local Development Framework for Bradford
- The Process
- Core Strategy
- Current Consultation

City of Bradford Metropolitan District Council
www.bradford.gov.uk

Local Development Framework for Bradford

- **Adopted Replacement Unitary Development Plan (October 2005)**
- **Local Development Scheme for Bradford (Revised March 2007)**
- **Key Documents**
 - Core Strategy
 - Allocations (housing, employment and safeguarded land)
 - Open Space
 - City Centre Area Action Plan
 - Waste

City of Bradford Metropolitan District Council
www.bradford.gov.uk

City of Bradford Metropolitan District Council
www.bradford.gov.uk

Local Development Framework for Bradford

Regional Spatial Strategy for Yorkshire and the Humber:

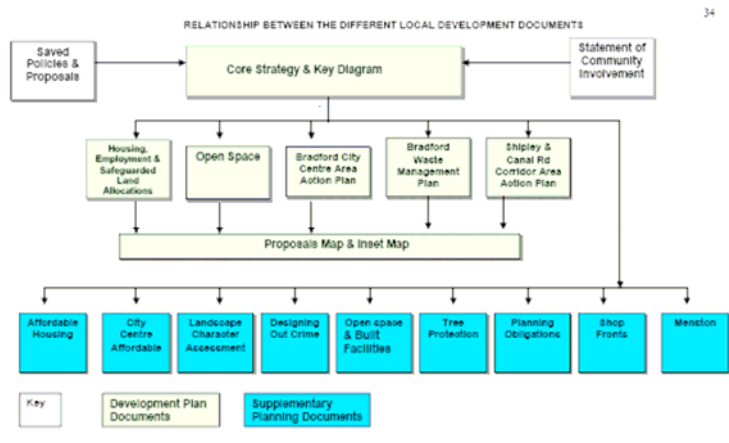
- Sets out the broad approach to development and change in region
- Identifies the role of Bradford in Leeds City Region
- Sets the number of houses Bradford should provide for

City of Bradford Metropolitan District Council
www.bradford.gov.uk

LDF Process

Key stages of LDF preparation:

- Pre production
- Issues and options
- Preferred options
- Submission
- Examination
- Binding Report
- Adoption



City of Bradford Metropolitan District Council

www.bradford.gov.uk

Core Strategy

- First DPD sets out the 'big picture' through a spatial picture and vision
- Other LDF documents deliver a detailed approach in line with Vision, strategy and Core Policies
- Not site specific but needs to broad locations of development, change and restraint etc
- Succinct written statement with spatial policies supported by a key diagram

City of Bradford Metropolitan District Council

www.bradford.gov.uk

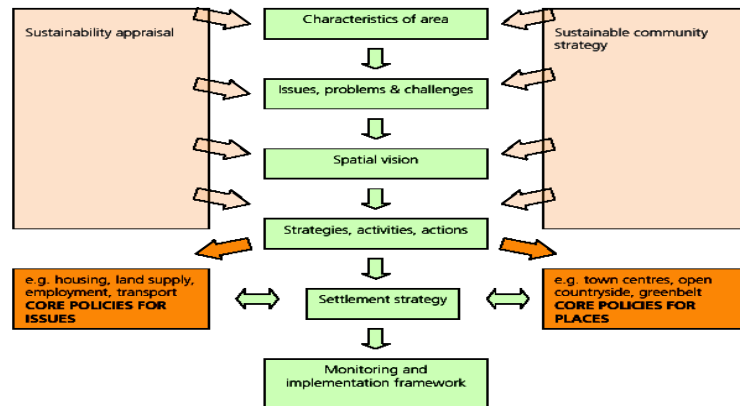
Core Strategy

- **Executive Report 6 February 2007**
- **Set of 8 Topic Papers**
 1. Introduction and Background
 2. The Spatial Vision and Strategy for Bradford
 3. Meeting the needs for dwellings in the District
 4. Economy and Jobs
 5. Transport and Accessibility
 6. Community Facilities
 7. Environment
 8. Waste Management

City of Bradford Metropolitan District Council

www.bradford.gov.uk

figure 1: core strategy key elements



City of Bradford Metropolitan District Council

www.bradford.gov.uk

Vision (Part 1)

A sustainable District which ensures the well being of its residents and visitors through:

- A vibrant high skill economy fully integrated with the wider city region and northern economy focused on delivering the potential of the city of Bradford and Airedale and spreading those benefits to the whole district.
- Enhanced role of Bradford City as the key regional centre with the city centre a thriving sub-regional shopping, commercial and transport hub with a balanced and strong district wide economy

City of Bradford Metropolitan District Council

www.bradford.gov.uk

Vision (Part 2)

- A Well connected District where everyone has access to decent affordable housing, jobs, health and community facilities.
- Continued protection and enhancement of its natural environment, heritage and diversity through high quality development and land management
- High quality new development, which contributes to the renaissance of the district which reinforces and builds on the existing character and promotes sustainable design

City of Bradford Metropolitan District Council

www.bradford.gov.uk

Consultation process

- **6 weeks from 16 February to 30 March (extended)**
- **Targeted consultees**
- **Partnerships and networks**
- **Difficult to reach groups**

City of Bradford Metropolitan District Council

www.bradford.gov.uk

Consultation Process

- **Area Stakeholder Conferences (May/June)**
 - Airedale (19th May)
 - Bradford (23rd May and 23rd June)
 - Wharfedale (16th June)
- **Topic Stakeholder conferences**
 - Housing (22nd March)
 - Transport (28th June)
 - Waste (30th March)
 - Economy and jobs (linked to Economic strategy)

City of Bradford Metropolitan District Council

www.bradford.gov.uk

Questions

City of Bradford Metropolitan District Council

www.bradford.gov.uk

Introduction to Workshops

City of Bradford Metropolitan District Council

www.bradford.gov.uk

Where Next?

- **Record and consider consultation feedback**
- **Consider new evidence**
 - Local Housing Assessment
 - Urban Potential Study
 - Flood Risk Assessment
 - Employment Needs Assessment
- **RSS Panel Report and Modifications**

City of Bradford Metropolitan District Council

www.bradford.gov.uk

Where next?

City of Bradford Metropolitan District Council

www.bradford.gov.uk

Where Next?

- **Feedback Workshops (Autumn)**
- **Refined development Options (Autumn)**
- **Preferred Options (January 2008)**
 - Identify chosen approach
 - Set out reasons for discounting other options
- **Housing and Employment Allocations DPD**
 - Issues and Options Spring 2008

City of Bradford Metropolitan District Council

www.bradford.gov.uk

Web Information

- **Council general planning**
www.bradford.gov.uk/planning
- **Bradford Local Development Framework**
www.bradford.gov.uk/environment/land_and_premises/local_development_framework/
- **Department of Communities and Local Government**
<http://www.communities.gov.uk/>
- **Planning Advisory Service**
www.pas.gov.uk

City of Bradford Metropolitan District Council

www.bradford.gov.uk

Contact Information

Local Development Framework Group

- local.development.framework@bradford.gov.uk
- ldf.consultation@bradford.gov.uk
- 01274 434050

8.0 PROMPT SHEET

Workshop Session 1 – Prompt Sheet

The facilitator should ask all delegates to briefly introduce themselves (i.e. name, the organisation they represent and what their interest is in planning).

The facilitator should state that their role is to encourage debate and to inform the group that a note will be taken of the meeting - but that this will be a general note and not attributable to individuals.

Developing a Vision for the Bradford District

The aim of this workshop is for delegates to give their views on the planning issues that should be contained within the Core Strategy spatial vision.

The following issues have been placed on cards as a series of ‘unloaded’ headers, with the aim of group’s ranking each according to whether they feel they are of high or low importance. Each card will need to be ranked on an A0 foam board. The cards are of the big issues facing the district and are what we think the document should be tackling. The cards are of big issues and are as follows:

- Growing local economy
- Socially inclusive and vocal communities
- Choice of housing opportunities
- Role of the City Centre
- High quality design
- Historic and the natural environment
- Access to public transport
- Transport infrastructure investment (connections within and outside district)
- Role of Regeneration
- Role of the Green Belt
- Access to leisure and recreation
- Access to housing, employment, shopping, health, culture and education
- Climate change
- Sustainable waste management
- Natural and renewable resources

(The above list has been lifted from section 4, Para 4.4 of Topic Paper 2)

Delegates should be encouraged to add any issues that they feel we have missed.

Ask questions such as:

Q. What does this issue mean to you in terms of Bradford?

Q. How important is this issue?

Q. Have we missed any issues that you think are important and should be included?

At the end of the workshop a digital photo will need to be taken of the board – as it will be used again at the other events.

Workshop Session 2 – Prompt Sheet

Location of Development & The Role of Settlements in Meeting Needs for Employment & Housing

The aim of this workshop is for delegates:

- a) To devise an approach to locating development for housing and employment across the district, and
- b) To think about the role that each settlement will play in meeting needs for housing and employment.

In this workshop delegates will be asked to place counters on an A0 foam board. For housing, each colour counter represents a different number of houses. Housing counters should tally up to approx 31,000¹ dwellings. (31,000 dwellings + housing requirement figure in draft RSS to 2021)

In terms of employment, the RSS recognises Bradford as one of the main drivers in delivering a growing regional economy. E.g. each day more people travel to Bradford district to work then leave to work elsewhere. Over 80% of firms within the district are smaller, made up of 10 employees or less. Employment counters are of various colours these refer to the no of employees and do not need to tally, as there is no specific requirement for employment.

Location of Development

The facilitator should introduce the workshop by referring to the 31,000 dwellings. The aim of the workshop is to come up with an approach on how these should be distributed across the district,

The facilitator does not need to go into each of the spatial strategy options identified in Topic Paper 2, Section 5, para 5.10 – 5.14 when introducing the workshop, as this would be steering the debate. However on a personal level the facilitator will need to know the Core approach² (para 5.11). This states that development should be:

- **Focused within Bradford City, Shipley & Baildon** – due to good transport connections.
- **Larger settlements in Airedale (Keighley, Bingley & Silsden)** – Focus for economic development and limited residential development to meet local needs.
- **Larger settlements in Wharfedale (Ilkley, Menston, Burley)** – limited economic developments and limited residential developments to meet local needs.
- **Other well located larger settlements on the urban fringe (Queensbury, Thornton)** – limited economic development and limited residential developments to meet local needs.
- **Small less well-located villages (Cullingworth, Wilsden & Oxenhope etc)** – limited economic development and limited residential development to meet local needs.

¹ Please note that this figure is likely to rise, in the final RSS, by an extra 3,000 dwellings based on more recent population projections.

² The Core Strategy Preferred Option may have apportionments for housing in each of the above areas as this appears to be the approach that the Government Office is promoting.

- **Priority in all above cases to previously developed land unless a Greenfield location is more sustainable.**

The facilitator should get delegates to think about all the above areas in meeting needs for housing and employment and not just their own locality.

Option A – C (para 5.13) are variations of the Core Approach. Briefly,

Option A – Focused Dispersal

- Focus development in main urban area of Bradford (intensification)
- Development on allocations in lower order settlements with good transport infrastructure
- Use of safeguard land

Option B

- All settlements make provision to meet district's needs

Option C

- New development focused in key locations potentially involving substantial changes to the Green Belt.

Role of Settlements

Delegates should be asked to think about the role of settlements in meeting needs for housing and employment. The following location principles could be used as a guide:

- Should the majority of development take place in the existing built up main urban area?
- Should smaller settlements on good transport routes provide a commensurate level of development?
- Should development in less well-located smaller settlements be limited to meet local needs?
- Accessible locations for new development
- Priority to previously developed over Greenfield land.

Once delegates have come up with an approach the facilitator will need to discuss the implications of such an approach. For example,

- If some settlements have no housing development this will have implications for affordable housing, local 1st time buyers may have to move away, etc.
- Green Belt releases on edge of main urban area if Bradford is chosen as the only location.
- Should employment land be allocated/continue to be protected within villages?

At the end of the workshop a digital photo will need to be taken of the board – as it will be used again at the other events.

9.0 FACILITATORS NOTES

WORKSHOP SESSION:	KEY ISSUES
TIME:	10.00 to 10.45
GROUP:	A
FACILITATOR:	Andrew Marshall
NOTE TAKER:	Tom Walton

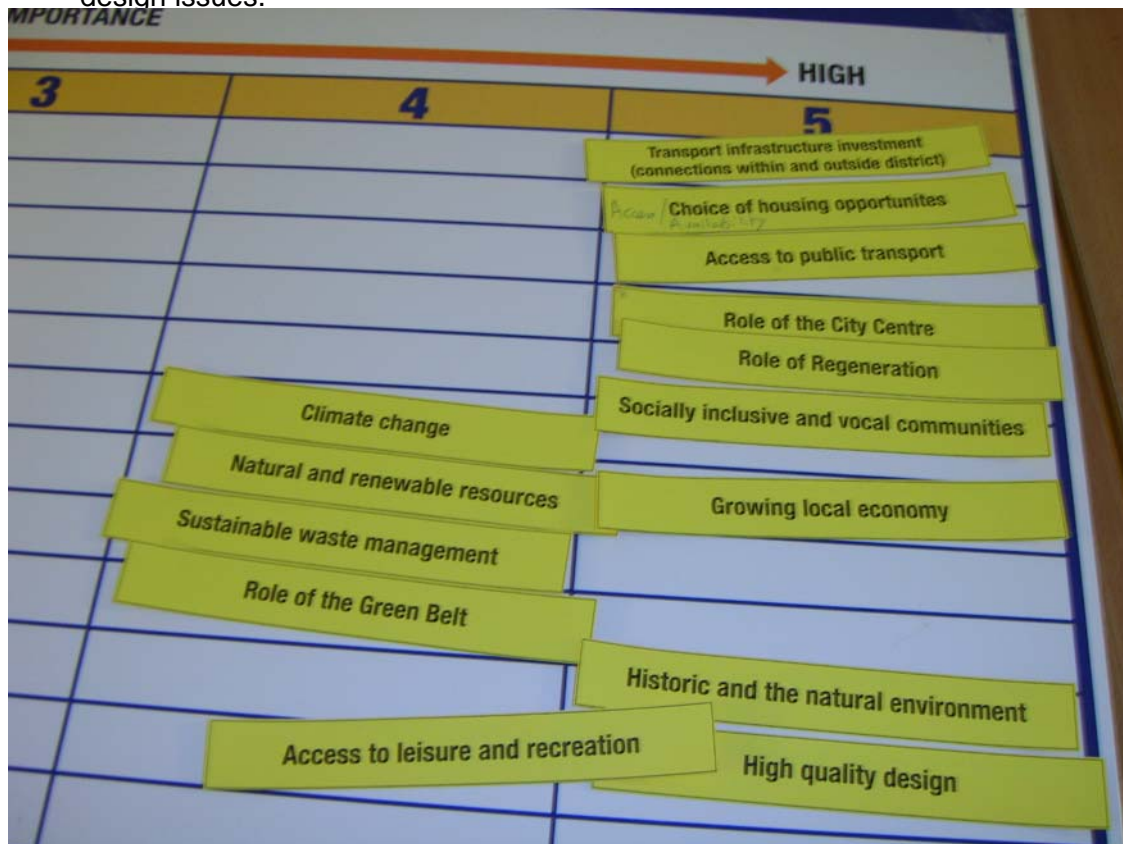
Introduction

- The members of the group, the facilitator and the scribe introduce themselves
- Outline the workshop aims and approach

The following points were made during the workshop (but not necessarily in the order set out below).

- Transportation getting it right then other problems resolved.
- Recognition of timing of transport to get people to where they want to go
- For car drivers it's a nightmare getting into Bradford – particularly a problem for business people for whom public transport is not always the best option.
- Not enough parking for disabled and spaces not where they should be.
- Perception one-way traffic out of Bradford not actually true.
- Transport to London and other neighbouring cities from Bradford inadequate – Leeds is not the only important place to go in the district.
- No opportunities for housing particularly for single men and rents are very high.
- People buying and re-letting on double rents.
- Renting for profit when people desperate for affordable housing.
- Not enough social housing in Bradford. For vulnerable groups there is a safety issue as well as the issue of access to housing.
- Why isn't the council building houses for refugees?
- Role for private developer (Quirke Report) – community owning assets for the benefit of the community.
- Affordability issues – new LDF can specify the mix of housing which the old UDP could not.
- Section 106 money should be directed to low cost home ownership – lowest price house in Bradford is £60000 – should be more pressure on developers to provide affordable houses.
- Section 106 could also cause developers to “run away” if the demands are too onerous.
- In reality how much will these consultations affect the direction of the strategy?
- Unskilled labour market – no investment in demand led economy.
- Need investment back into educational buildings.
- Not just public/private sector there is now a 3rd sector (the communities) – the private sector just for profit – the public sector has no money – needs to be community ownership of assets.

- A key issue is getting the community on board if the community is not on board not the support for the city. We need to actually listen to the community not just go through the motions of pretending to listen.
- Perception that Neighbourhood forums are not used - tend to be talking shops and not doing.
- High quality design very important for the image of Bradford.
- People tend to come into Bradford and out – not a decent department store.
- Poor people cannot afford to come into the city for leisure and recreational facilities – so need local facilities – even Ilkley has areas of poverty.
- Climate change and renewables integral to other issues in the plan – should these be the key drivers to the Strategy – they are also linked to high quality design issues.

**WORKSHOP SESSION****TIME:****GROUP:****FACILITATOR:****NOTE TAKER:****Key Issues****10.00 to 10.45****B****Gerry McGuckin****Michelle Greenwood**

- Very important to support the economy and employment which already exists, need to ensure we do not lose what we already have
- More help should be provided to existing businesses
- A large employer in Bradford South is not supported by Council on things like access in to premises and waste management which means that the removal

of waste from within the site is done through existing residential routes, this is not appropriate

- This meeting has been arranged at a venue, which is difficult to get to unless delegates live within local area. There should be a similar meeting organised in the City Centre, where everyone can travel by public transport.
- This building is good community facility for the area it's a shame that there is not the equivalent in Bradford South.
- More jobs should be created near to existing housing stock.
- The population's skills need improving through higher education and voluntary training to enable locals to have access to any jobs that are created.
- People who come into district from Europe need to have the right skills for the jobs available. Language problems can lead to problems with health and safety.
- We need to protect local shops in small communities from losing trade to larger shops being built near by i.e. small to medium size supermarkets in villages taking away trade for local butchers, post office, and paper shop.
- Employment is changing many factories and engineering businesses are closing – the new jobs seem to be in service industries and therefore there is a mismatch of skills.
- Community centres are closing due to lack of funding. These provide many valued facilities for local residents and Council should try to retain them.
- Community facilities are not spread evenly throughout the District.
- Events and facilities organised in communities are sometimes exclusive rather than inclusive which shouldn't be allowed. Example given was for sex education awareness courses for young Asian men
- Where existing community facilities exist their uses should be protected through the plan and not be allowed to change.
- Someone in the Council needs to look at the spread and availability of community facilities across the whole District.
- Bierley and Sutton Community Centres are due to be closed
- There are not enough health facilities near to where people live. Multi use centres could be provided that include health facilities and other community facilities in new clean modern building with good access for all.
- Regeneration funding is required everywhere and should not be targeted to areas such as Manningham or Manchester Road. Everyone should be able to apply for regeneration funding and have an equal chance in being successful.
- Policy should include social inclusion of whole District?
- People should not label places as black or white areas. People should be encouraged to live in all areas.
- New developments should be asked to contribute to other facilities.
- It is important to protect all green land within the urban area more than it is to protect the green belt in local areas.
- It doesn't always matter what we say at these events because once a plan has been drawn up by the planning department, if there are any disagreements a Government Inspector has the right to change allocations and Policies the Council have included within its plans.
- If we protect everything as it stands now then where will new development go – does this mean green areas in the city are lost to provide housing and employment whilst still protecting the green belts around towns and villages.
- Why should everyone come to work in the city centre – jobs should be provided across the district in all settlements no matter how big or small?
- If early education were adequate then possibly we would not need to improve the facilities and availability of higher education.
- Disagree we need a good balance of education throughout life and both on vocational and academic sides.

WORKSHOP SESSION	KEY ISSUES
TIME:	10.00 to 10.45
GROUP:	C
FACILITATOR:	ISHA AHMED
NOTE TAKER:	ALI ABED

The main points raised and issues discussed in the workshop are as follows-

Social Integration

- The most important issue should be developing a vision focusing on ensuring a strong social integration and community cohesion among the residents of Bradford. 'Planning' should try in a better way to be more inclusive in addressing this issue and tackling any perceived problems. For example, providing separate community centres in different localities could further exacerbate the segregation problem not only between communities with different race, religion, culture and/or traditions but also between communities with same backgrounds.
- A central area e.g. local library could be the best place for people from different background to interact and communicate with each other.
- Law and Order could be an important instrument to help reduce/avoid social differentiation more effectively. If everybody abides by the laws and rules, communal differences should not pose a threat to collective responsibilities.

Housing

- Housing policy should not only focus on the housing need and affordability issues but also act as an instrument to contribute to achieving better community cohesion.
- There are growing concerns that some areas in Bradford are changing because of white flight which could be intervened by better planning policies e.g. housing policy etc.
- There appears to be no control over private housing developments which could be better used to encourage integration between different communities through mixed use developments rather than developing particular type of housing to attract particular communities e.g. small units/flats for White people and big houses for large Asian families.
- An example of private housing development on the former BMW showroom site on Oak Lane has been made, regarding the above issue, to appreciate developing large family units that will attract Asian families to an area which was once lived predominantly by White community. But, on the contrary, some people strongly opposed the idea of developing these large units primarily appears to be attracting only large Asian families and viewed it as an opportunity missed to encourage community integration through mix use development instead.
- Most of the houses in Bradford were made during the late 18th and early 19th century which will become redundant sooner or later. So there is a need to have a strategy for Bradford's old housing stock.

- It is particularly important to provide a mix of houses in the city centre area because affordability problem is acute in inner Bradford than anywhere else.

Economic Development

- Creating and promoting a strong economic (public+private) base is another big issue to focus on. Economic balance and competitiveness should be the main factor to concentrate on and it will drive other sectors to grow up sustainably.
- Develop economic policies to attract high paying firms into Bradford as they will contribute towards eliminating the differences between low paid/low skill and high paid/high skill jobs that currently exist in Bradford.

Bradford City Centre

- The role of Bradford city centre to provide accessible and varied opportunities for shopping, leisure and business is very important. The ongoing regeneration should give the much-needed big boost to the city centre living and shopping; particularly the Broadway Development Scheme need to be attractive to ensure increased footfall in the city centre once it has been completed.
- High quality facilities are important to achieve high quality and sustainable regeneration.
- The city centre needs more quality shops and leisure facilities. The Broadway Scheme hopefully will act as a catalyst for further and large-scale investment in Bradford's high street shopping and leisure sector.
- The city centre also needs more evening leisure facilities. Compared to Leeds, Bradford seems almost dead in the evening.
- Safe, secure, cheap and easily accessible parking facilities are absolutely crucial for attracting shoppers to the city centre and preventing leakage through out-of-town shopping. People still prefer car as the most convenient mode of travel when they are out shopping with families or at night or when they need carrying bulky items. The city centre should be better designed to ensure the availability of more accessible and affordable parking facilities for both shoppers and visitors.

Public transport and Transport Infrastructure

- Increased investment in transport infrastructure should get a priority in order to establish better connections both within the district and with other parts of the region and country.
- Public transport infrastructure in Bradford is good but the services need to be affordable and more accessible to the vulnerable groups e.g. elderly people, women, disabled etc.
- There are still areas within the district that are not properly served by public transport to facilitate shoppers to spend in the centres.
- It is very important to evaluate the areas within the transport sector that need to be prioritised i.e. should it be better roads or public transport or both.

Greenbelt

- Safeguarding Bradford's Green Belt is another important issue to consider. Green belts provide an attractive and vibrant landscape and add relief to the built-up areas. These areas need to be preserved.
- But Green belts are increasingly getting vulnerable to pressures from developers. Releasing some of the green belts for housing development in selective areas could help to drop house prices.
- Protecting or releasing green belt areas should be very carefully thought about.

Brownfield

- Development on Brownfield sites is very important. Local Authority should exercise more power to push private owners of derelict/Brownfield sites to develop them.

Climate Change and Environment

- The issue of tackling climate change should be better achieved through ensuring high quality building design with energy efficiency and promoting sustainable waste management techniques.
- Planning for healthy environment is important. Young people should get easy access to debates relating to health and environment issues.

Waste Management and Energy

- Some areas e.g. Southampton has been very successful in recycling. So why can't Bradford?
- New homes should to be better designed and constructed to save energy e.g. insulation to prevent heat loss.
- It is vital to generate more debates on these issues and carry out more public consultations with wide range of peoples including the vulnerable groups e.g. young people, pensioners, disabled etc.

Building an Image

- There is a need to polish up Bradford's image through increased media coverage and regular cultural events. Bradford has a good mix of traditions, culture and food which is very rare. We just need to put a bit more effort together to promote the good image of the City.



WORKSHOP SESSION: Key Issues
TIME: 10.00 to 10.45
GROUP: D
FACILITATOR: Leah Midgely
NOTE TAKER: William Cartwright

Introduction

- The members of the group, the facilitator and the scribe introduce themselves
- Outline the workshop aims and approach

The following points were made during the workshop (but not necessarily in the order set out below).

- Learning from past mistakes (new suggestion) – Importance [not placed]
- Local economy - Importance – 5
 - There are two parts to the local economy and urban part and a rural part
 - The two speed rural economy (commuters versus locals) and the high cost of housing in rural areas is creating polarised villages in which local people cannot afford to live

- Affordable housing – Importance 5
 - Most houses should be built in sustainable urban areas
 - In some cases new development has not fully considered infrastructure limitations such as sewerage
- Role of the city centre – Importance 5
 - The city centre needs to be distinctive
 - The rest of the District needs investment too
 - The inner city especially needs investment
 - New city centre development needs to complement and respect the older historic buildings
- Role of regeneration – Importance 4
 - This is a broad term, what does it mean?
- Historic and natural environment – Importance 5
- Transport infrastructure and investment – Importance 4
- Access to public transport [and improvement of the bus network – added] – Importance 4
 - There are problems in rural areas with poor services
 - New occupants of expensive rural housing don't use bus services
- Choice of housing opportunities – Importance 5
 - We need mixed balanced communities with different dwelling sizes, types and tenure
 - City centre housing development needs to be more balanced
 - The role of the city centre should primarily be in accommodating employment as it's the most accessible location - but not everyone agreed and most though there ought to be a balance like cities in continental Europe
- Access to housing [split from below as is more essential] – Importance 5
 - Housing is essential as without an address other services are difficult if not impossible to access
- Access to employment, shopping and health [housing put on its own] – Importance – 3
- High quality design – Importance 5
 - Standards need to be higher even for affordable housing
 - High quality design is important for the city centre
- Maintain and enhance local identity [new suggestion] – Importance 5
 - Bradford needs to build on its strengths and should not copy Leeds or other cities
- Climate change – Importance 5+
 - Links in with everything else
 - All encompassing
- Bradford's employment needs across the District – Importance 3

- Role of the greenbelt – Importance [not placed]
- Extra resources for the planning department [new suggestion] - Importance [not placed]
- Build Bradford's profile – Importance [not placed]



WORKSHOP SESSION: Location of Housing and Employment
TIME: 11.00 to 12.30
GROUP: A
FACILITATOR: Andrew Marshall
NOTE TAKER: Tom Walton

Introduction

- The members of the group, the facilitator and the scribe introduce themselves
- Outline the workshop aims and approach

The following points were made during the workshop (but not necessarily in the order set out below).

- Are luxury flats what are actually needed in the city?
- Do high density and quality housing go together?

- Is employment land in Wyke suitable for housing as there is a high demand for housing in the area?
- Piling in the houses with no account taken whether the roads/transport can cope and the wider infrastructure (schools)
- RSS says most of the housing should be located in the urban areas
- Redeveloping estates we are just replacing what was already there and we could be even losing out in terms of units

- Communities on the periphery are saying leave the Green Belt alone – does this mean intensification of the urban areas?
- Trying to put life into the city – importance of housing in the city.
- Urban potential – may be the potential but this may not be in the right place.
- Conversion of mills into housing in the villages may mean they lose their economic base
- Young people cannot afford the price of property
- Does housing have priority over the Green Belt

- Employment seems to be going to a service economy – how do we get manufacturing back? - Bradford trying to keep the “high end” economy.

- Should we be just looking at Bradford or the wider region? Are the boundaries of Bradford meaningful in this respect? – RSS is actually looking at the wider area.
- How do we link the deprived areas to the jobs

- Community is the key concept - we need to ensure we have the schools, health centres where we have the housing.

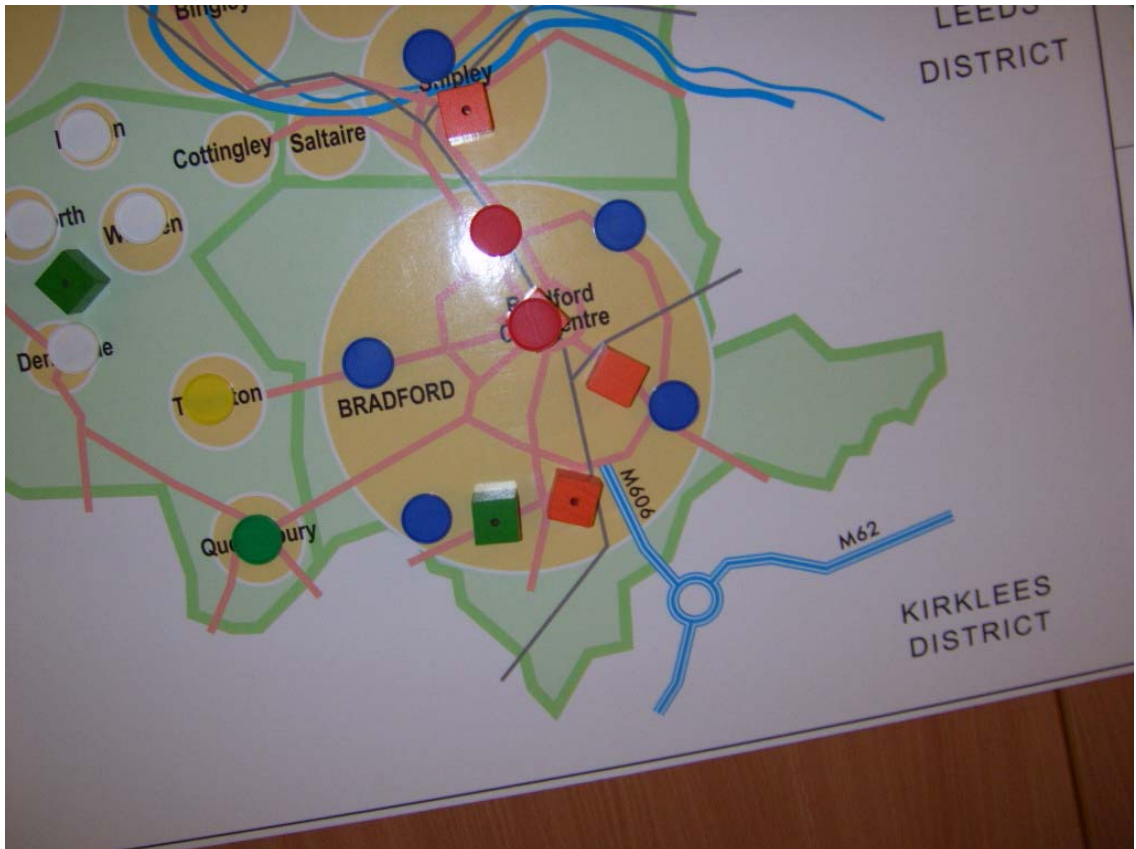
- Should development be in the villages? What about Bingley as the potential economic development will be an attractor?
- In general growth is going to put extreme pressure on the infrastructure.

- Has the interaction between the communities been taken account of?

- Is Bradford just over capacity and can't cope - if this is the case the Green Belt will have to be looked at (new settlements?).

- Concern that community cohesion is being forgotten in the process.
- Refugees are here to stay – they need to be taken into consideration in the planning process – Need to be aware of this in the plan.

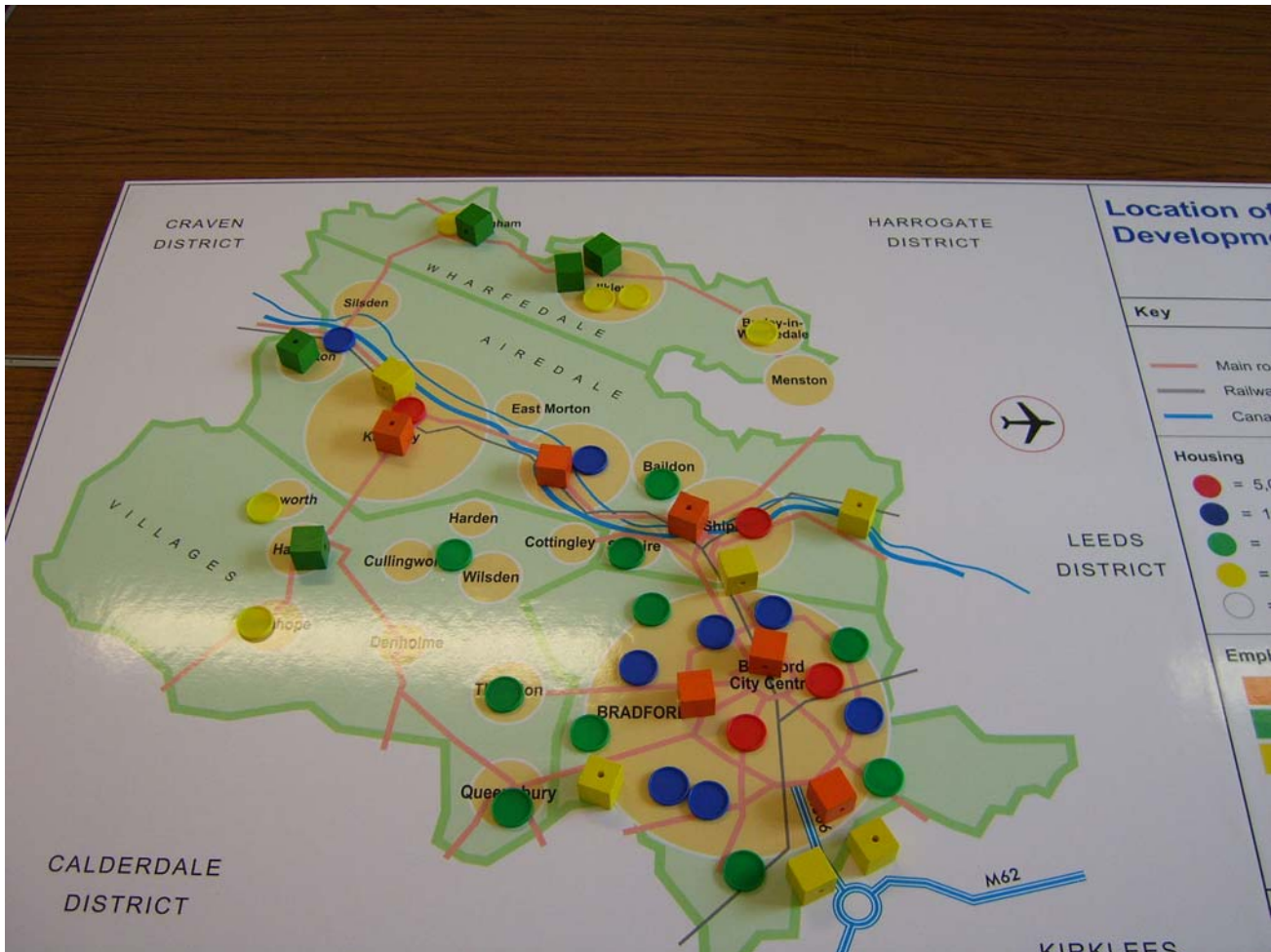
- How do we provide for jobs in the district?
- M62 corridor has a massive part to play and we should be making more use of it – transport links should be made to the corridor.
- Impact of home working how do we plan for this – need to attract new businesses into the area and this could be an issue.
- There is a clash between employment and housing in certain areas of the district (Canal Road proposals).
- Thornton – a lot of people in Thornton work in Keighley/Halifax
- Massive deprivation in villages seems to be forgotten about in job terms.



WORKSHOP SESSION : **Location of Housing and Employment**
TIME: **11.00 to 12.30**
GROUP: **B**
FACILITATOR: **Gerry McGuckin**
NOTE TAKER: **Michelle Greenwood**

- I think that to achieve 31'000 net gain in housing numbers we should encourage higher densities. The tall residential units proposed at Canal Road should not have height restrictions.
- Leeds has allowed high rise residential blocks, this doesn't always work, not everyone wants to live in them and some of the ones in Leeds have been bought by investment companies and do not bring people to the city.
- Houses should be provided in all parts of the district not everyone wants to live in the city centre.
- The apartment developments in Leeds have provided for the housing needs of Leeds nor reduced the requirement or demand for housing.
- Market assessments need to be done for the whole district to find out where people want to live and what other aspirations they have.
- I think we should allow high-density developments in the centres but this should not be taken into account when assessing requirement and need.
- Affordable housing should be allowed in the city centre to kick start regeneration but this will not achieve the required units for families.
- I think we should put the same amount of units, i.e. 100 units into each of the outlying villages to provide for local need.
- I think that bus routes should be provided before new houses become available.
- There is a need to build on greenfield in the larger towns because the land does exist and these are where the job are available.
- A balance is required i.e. in outer areas where there are lots of large houses with vast gardens we should allow redevelopment at a higher density.
- Should only put additional houses on existing estates where community, education and transport facilities are adequate to take extra users.
- Work places in the Aire Valley are good and many have large car parks, which enable people to drive to them rather than use public transport.
- Staggered working patterns would solve a lot of the transport issues at peak periods.
- Cannot provide much more than 200 units at Wharfedale/Ilkley due to the topography of the area.
- Other villages could increase by 10 units per year.
- Restrictive covenants need to be put in place to keep the houses, which are provided on an affordable basis to remain affordable especially in villages.
- To really make a difference and keep houses affordable would stop all right to buy policies on public housing.
- If we build high-rise to meet housing need it should include community facilities.
- 60% of development should be on brownfield sites therefore we should insist on high-density development on brownfield sites.
- Can Council use Greenfield Taxes to provide infrastructure before development takes place.
- To get the 31'000 houses required we should put around 18000 in the Bradford suburbs.
- When the Aire Valley Trunk Road was built why didn't it include a direct access into Airedale General Hospital?

- People need to be made more aware of the need to provide houses. It was generally felt that people didn't realise the numbers of houses required and the amount of land needed. As stated earlier not everyone want to live in high-rise but it is the solution to finding enough land to build on.
- Does Bradford Council have money to provide housing or is it provided by private sector?
- Most Local Authority offices are in centre, could they move out of centre to less expensive areas?
- They should stay in Centre because that's where they are accessible.
- Yes but most Council contacts are made through call centre – so people don't make as many visits.
- Most land for employment in the last few years seems to be in south Bradford.
- This is because of the road links to other areas.
- Small business starter units are also important to encourage smaller new businesses.
- Mixed-use approach is good but is limited to the cleaner and less noisy industries.
- I think that some Council services should move into the vacant buildings such as one on Godwin Street below former Sunwin House to bring them into use.
- Should focus large distributors near to the best transport links and not where they will add to congestion that already exists. Wouldn't allow any larger used uses where they will encourage people to travel through Saltaire, as congestion is very bad here in both directions.
- Every small settlement should have employment allocations.
- The towns in the District need offices, they shouldn't all be concentrated in City Centre.
- Houses that allow people to work from home should be provided
- Need a policy to share out mixed use in high-rise buildings.
- Parking policies are needed because not everyone will use public transport. When buying a house parking is high on list of priorities.
- Employment apprenticeships and links to college vocational apprentices are needed.
- High-density developments (high rise) should be allowed near to transport interchanges.
- Timescales are important and should also think about providing for recreation not just houses and jobs.
- Should provide houses that reflect the district's needs, not everyone is able to buy a house and rents are not cheap anymore. Affordability is a big issue that is why we have homeless people and the need to provide shelters.
- Any plans or proposals should look at need in greater detail. Strategic land releases in relevant areas will help provide affordable houses.



WORKSHOP SESSION	Location of Housing and Employment
TIME:	11.00 to 12.30
GROUP:	C
FACILITATOR:	ISHA AHMED
NOTE TAKER:	ALI ABED

The main points raised and issues discussed in the above workshop are as follows-

Where and What

- Focus New Development on larger centres e.g. Bradford, Shipley, Keighley, Baildon.
- The Council should aim at high-density development close to public transport hubs e.g. train or bus station.
- Bradford city centre should be the prime location for developing new housing and employment opportunities due to its good transport connections, which is vital for people to travel in and out of the city for work.
- Proposed Channel Urban Village and Cathedral Quarter development should accommodate as many as 10000 units by 2021. High quality residential

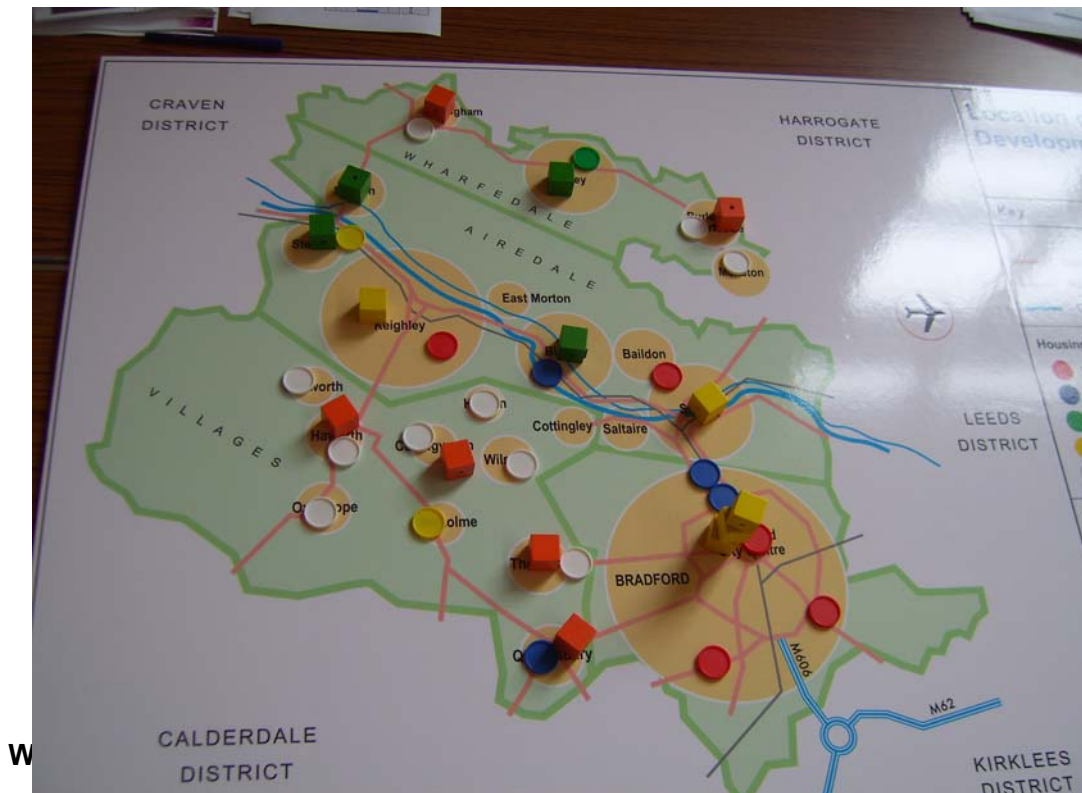
development of this kind would motivate other residential development in the Bradford City Centre.

- It is however particularly important to provide a mix of houses in the city centre area because affordability problem is acute in inner Bradford than anywhere else.
- Canal Road Corridor- would there be a mix use development? Some retention of the existing employment allocation along the corridor is necessary.
- Reintroducing canal would not be a good idea. It was closed for good reasons (health related) and therefore new development along the canal corridor will not be feasible.
- Due to increased pressure for higher density development the Canal Road Corridor scheme might struggle to provide more green areas, which is important to some potential residents.
- Contrary to the above, people who would opt for living in the city centre should expect compact built-up surroundings rather than looking for green spaces/garden area.
- Development in other small and larger settlements e.g. Keighley, Bingley, Shipley, Silsden, Ilkley, Menston, Queensbury etc, is also necessary to avoid cramped city centre development without much space for relief.
- Housing development in certain areas e.g. Ilkley, Keighley, Shipley should be carefully thought about because they may not be accessible to young people.
- Need more houses in Keighley.
- Mills and underused firm buildings in Saltaire and Shipley need to be converted for housing. However there is a concern about the historic value of the buildings and whether they will be suitable for young people or not.
- The issue is not only about selecting settlements to accommodate potential future development needs but also about encouraging rational debate on how each of those needs could be linked together e.g. employment-housing-community facilities.
- Bowling Lane- poor warehouse area. The area could be better utilised to provide some housing or employment or both as it has good transport connection and easy accessibility.

Other Important Issues

- Peoples need more support/information to get a holistic idea about the hierarchy of settlements within the district.
- Large-scale developments in larger settlements need to incorporate the relevant sustainability issues as they will put an extra pressure on the existing facilities. It would therefore be a better approach to encourage development in such settlements where new development will provide more flexibility and choice to decide on the scope of those facilities.

- Any development should aim at facilitating strong community cohesion and encouraging social integration. Otherwise one particular group or other could avoid it.
- Creating local job opportunities is vital to decide on the number, type and location for potential housing development. The council's policy should also encourage more 'live and work' proposals to utilise local skills and reduce the need for commuting.
- It is absolutely essential to facilitate employment allocation with better transport connections in order to increase the vitality of the sites. By making employment allocation you could only encourage development on the sites but can not make it happen.
- 'Transportation' (public transport road network+transport infrastructure) is the main factor that needs to be dealt with priority in order to propel sustainable development in different settlements.
- Public transport in Bradford is not satisfactory. It's getting expensive, less smart.
- Public transport service needs to be regular, cheap and perhaps subsidised.
- Transport plan/policies should ensure better connections and services to certain communities living in villages where public transport is the lifeline to the outside area.
- Reopening the closed/lost railway link could contribute towards servicing communities in remote areas.
- There is a need to do something to discourage people coming to Bradford from smaller settlements. It will cut down the need to travel, reduce pressure on public transport and create opportunities for local employment base and housing demand.
- However, we still do not know what may happen to transport sector in the future. We did not know 10-15 years ago what would be the impact of internet and similarly it is difficult to anticipate any possible change in transport sector in 20/30 years time. Petrol rationing?



TIME: 11.00 to 12.30
GROUP: D
FACILITATOR: Leah Midgley
NOTE TAKER: William Cartwright

Introduction

- The members of the group, the facilitator and the scribe introduce themselves
- Outline the workshop aims and approach

The following points were made during the workshop (but not necessarily in the order set out below).

Employment

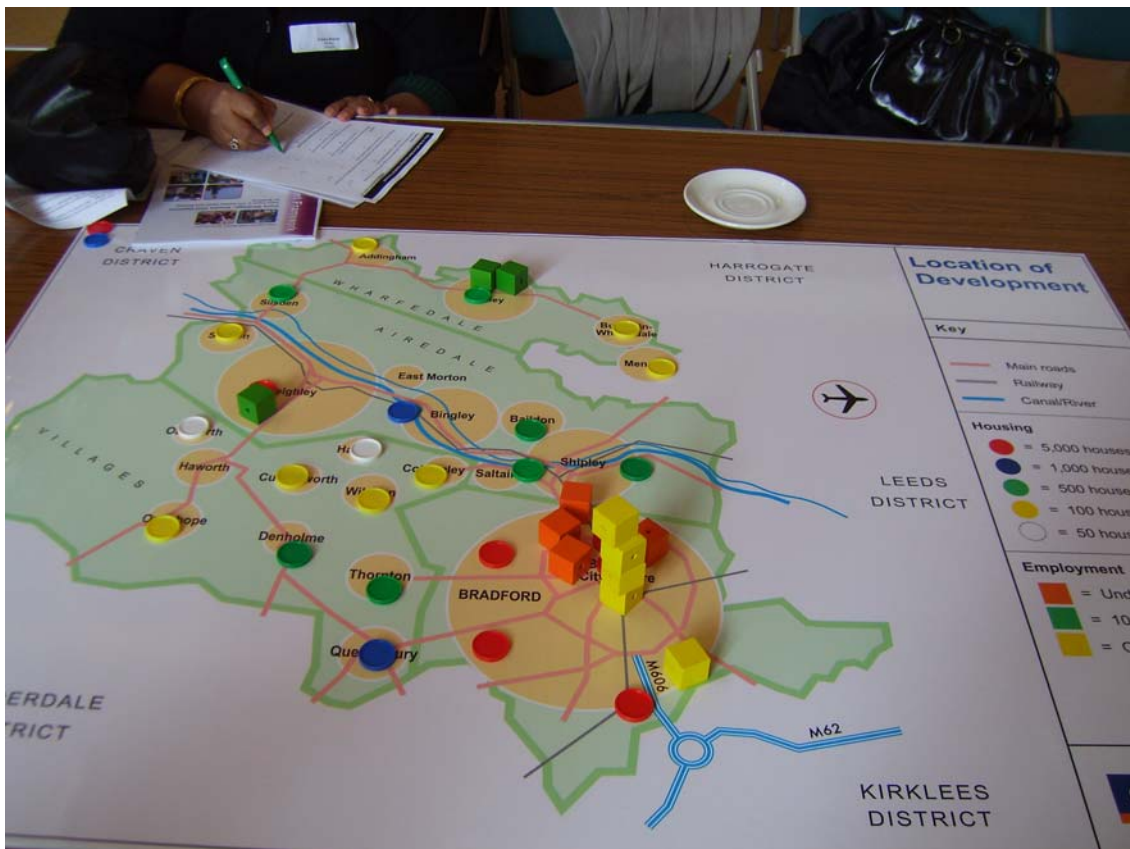
- To make things easier it is agreed that:
 - Yellow counters = significant increases/ much more employment
 - Green counters = a fair increase in employment
 - Orange counters = increases for local people only
- What is classed as employment and do the counters relate to jobs or firms?
- The focus for employment should be the city centre as it's the most accessible location within the District
- Future employment sites should be accessible via public transport

[Time ran out before employment issues could be fully addressed]

Housing

- How are these housing figures calculated, do they take into account demolitions? BCHT have recent plans for 100's of demolitions which may skew figures.
- How much brownfield land is there and where is it? This exercise is difficult without an urban capacity study.
- Housing should be built in the most sustainable and accessible localities
- Wharfedale should have more housing but it must be affordable
- Wharfedale should have a lower site threshold above which affordable housing will be required
- Consideration should be given to a new town but this must not undermine regeneration in the city centre and elsewhere
- Keighley must not be forgotten about – it needs investment in its centre and housing stock!
- Priority should be given to renovating disused housing
- Issues such as housing mix in terms of type, size and tenure need to be addressed to create sustainable communities
- New community facilities are required to support new development. Many schools are at full capacity and this needs to be taken into account
- High quality open space needs to be included in new developments

- Physical infrastructure is also stretched at many places within the District and this also needs to be considered
- Greenfield development should be the last option
- In many parts of the District the topography and other natural features create significant constraints
- Some of the group thought that all villages should accommodate some development to meet local needs however not everyone agreed that that all of the villages had the capacity to do this.
- People were supportive of development along Canal Rd although some people were concerned that if the road was up-graded to a dual-carriageway it would damage the residential appeal of the area



10.0 EVALUATION FORM

FEEDBACK FORM

LDF CORE STRATEGY – ISSUES AND OPTIONS STAKEHOLDER CONSULTATION EVENT

Please spend sometime to fill in the form below. Your feedback will help us to improve future events. Thank you.

Presentations/ Speakers

Was the level of detail provided appropriate?

1 = not enough detail and 5 = too much detail (please circle)

1 2 3 4 5

Were the presentations an appropriate length?

1 = too short and 5 = too long (please circle)

1 2 3 4 5

Please rate the overall quality of the presentations and speakers

1 = poor and 5 = excellent (please circle)

1 2 3 4 5

Was the content of the DVD appropriate for the event?

1 = not enough detail and 5 = too much detail (please circle)

1 2 3 4 5

Workshop Sessions

Were the workshops an appropriate length?

1 = too short and 5 = too long (please circle)

1 2 3 4 5

Please rate the overall quality of the facilitators

1 = poor and 5 = excellent (please circle)

1 2 3 4 5

Organisation

Please rate the overall organisation and management of the event on the day

1 = poor and 5 = excellent (please circle)

1 2 3 4 5

Please rate the communication and background material provided leading up to the event

1 = poor and 5 = excellent (please circle)

1 2 3 4 5

Venue

Was the venue convenient and easy to get to?

1 = poor and 5 = excellent (please circle)

1 2 3 4 5

Please rate the overall quality of the venue?

1 = poor and 5 = excellent (please circle)

1 2 3 4 5

Please identify the best features of the event

.....
.....
.....
.....
.....

Please identify any areas for improvement

.....
.....
.....
.....
.....
.....

Thank you once again for your time, please hand this sheet in

11.0 EVALUATION ANALYSIS

RESULTS

Thirteen feedback forms were completed and returned.

ANALYSIS

QUESTION	RESULTS				
	1	2	3	4	5
Presentations/ Speakers					
Q1) Was the level of detail provided appropriate? (1 = not enough, 5 = too much)	0	0	6	5	2
Q2) Were the presentations an appropriate length? (1 = not enough, 5 = too much)	0	0	8	4	1
Q3) Please rate the quality of the presentations and speakers (1= poor, 5 = Excellent)	0	1	4	6	2
Was the content of the DVD appropriate for the event? (1= not enough detail and 5= too much detail)	1	1	5	5	1
Workshop Sessions					
Q4) Were the workshops an appropriate length? (1 = too short, 5 = too long)	2	0	3	7	1
Q5) Please rate the overall quality of the facilitators (1= poor, 5 = Excellent)	0	0	4	4	5
Organisation					
Q6) Please rate the overall organisation and management of the event on the day (1= poor, 5 = Excellent)	0	1	3	4	5
Q7) Please rate the communication and background material provided leading up to the event (1= poor, 5 = Excellent)	0	0	6	5	2
Venue					
Q8) Was the venue convenient and easy to get to? (1= poor, 5 = Excellent)	0	0	2	8	3
Q9) Please rate the overall quality of the venue? (1= poor, 5 = Excellent)	0	1	1	5	6

Presentations/ Speakers

The results indicate that the level of detail and length of the presentation was appropriate. In terms of quality, the presentation was noted to be of a high standard. One delegate described it as being 'clear and concise'. The DVD's level of detail was deemed to be appropriate.

Workshop Sessions

The length of the workshops were thought to be of an appropriate length, although a couple of people commented that they could have been longer to allow for more discussion on other topics. The facilitators received very good feedback.

Organisation

The organisation of the event was deemed to be of a good standard.

Venue

It was noted that the acoustics of the venue made it hard to hear during the workshops as they all took place in one room. Due to bright light, it was said to be difficult for the participants to see the DVD. However, the easy car park, spaciousness and level entrance were praised, so overall the venue rated well.

BEST FEATURES OF THE EVENT

The workshops were deemed to be the best feature of the event as it allowed the delegates to discuss the key issues of Bradford. The opportunity to network was also considered to be a highlight.

AREAS FOR IMPROVEMENT

There was mention of there being a lack of ethnic minorities being represented at the event, so perhaps more efforts to amend this could be made.

CONCLUSIONS/ LEARNING POINTS

- The general format of presentation then workshops is still a success, even with larger groups
- The acoustics and lighting in this venue need to be improved
- The response rate to the feedback questionnaire should be improved

Produced by the
City of Bradford Metropolitan
District Council

Local Development
Framework Group

Summer 2007

City of Bradford MDC

www.bradford.gov.uk